



Australian Government
Department of the
Prime Minister and Cabinet

OUR NATIONAL Colours



Australia's national colours, green and gold, hold a special place in the nation's imagination.

Green and gold are also the colours of Australia's national floral emblem – the golden wattle.

The national colours be used in any design or arrangement of colour, emphasising the green or gold. To use them correctly, the two colours are placed together, unbroken by another colour.

The colour references are:

Green: PANTONE®348C and

Gold: PANTONE®116C



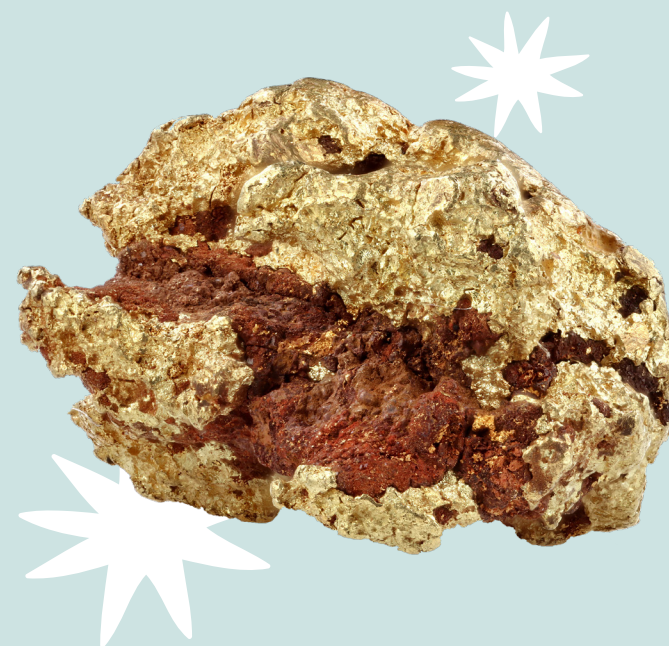
To find out more about Australia's national symbols visit pmc.gov.au/resource-centre



Long associated with Australian sporting achievements, the national colours have strong environmental connections.



Gold conjures images of Australia's beaches, mineral wealth, grain harvests and the fleece of Australian wool.



Green evokes the forests, eucalyptus trees and pastures of the Australian landscape.



HISTORY

Green and gold have been popularly embraced as Australia's national sporting colours since the late 1800s. In 1984, green and gold were made the official national colours of Australia.

Before 1984, three colour combinations unofficially represented Australia: red, white and blue; blue and gold; and green and gold.

Red, white and blue form the colours of the Australian National Flag and the first version of the Commonwealth Coat Of Arms.

Green and gold were proclaimed the national colours on 19 April 1984.