



Secretary  
Dr Steven Kennedy PSM ^

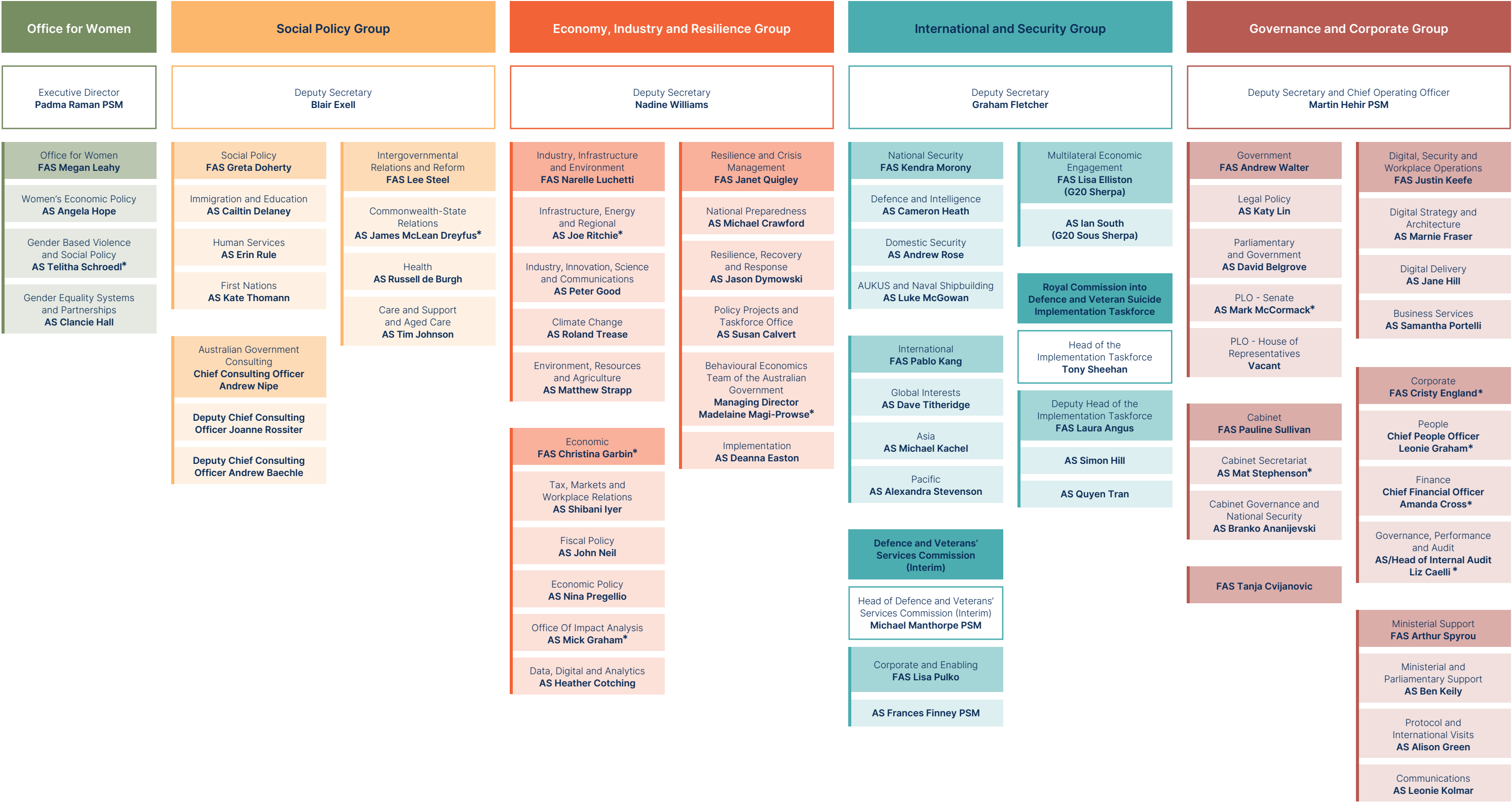
Chief of Staff  
Karla Rayner

Executive Assistant  
Amanda Paolo \*\*\*

Executive Adviser  
Madeleine Sharp \*\*\*

# PM&C Organisation Chart

as at 1 July 2025



\* Acting arrangement | \*\* Job sharing arrangement | \*\*\* Non-SES position | AS = Assistant Secretary | FAS = First Assistant Secretary | ^ Statutory appointment