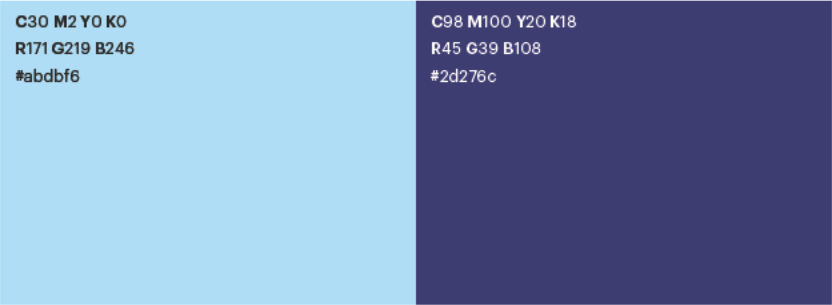


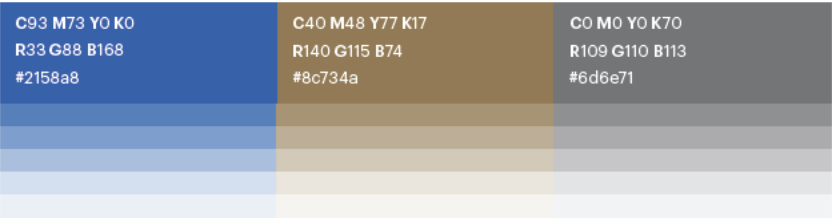
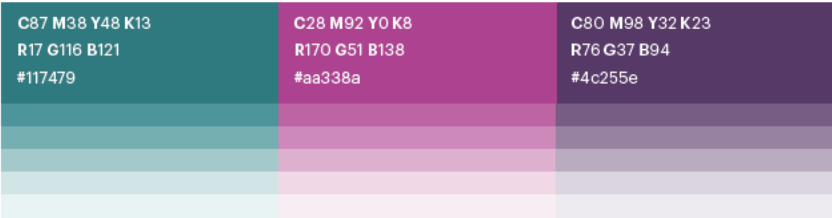
Colour theme 1



Colour theme 2



Complementary palette

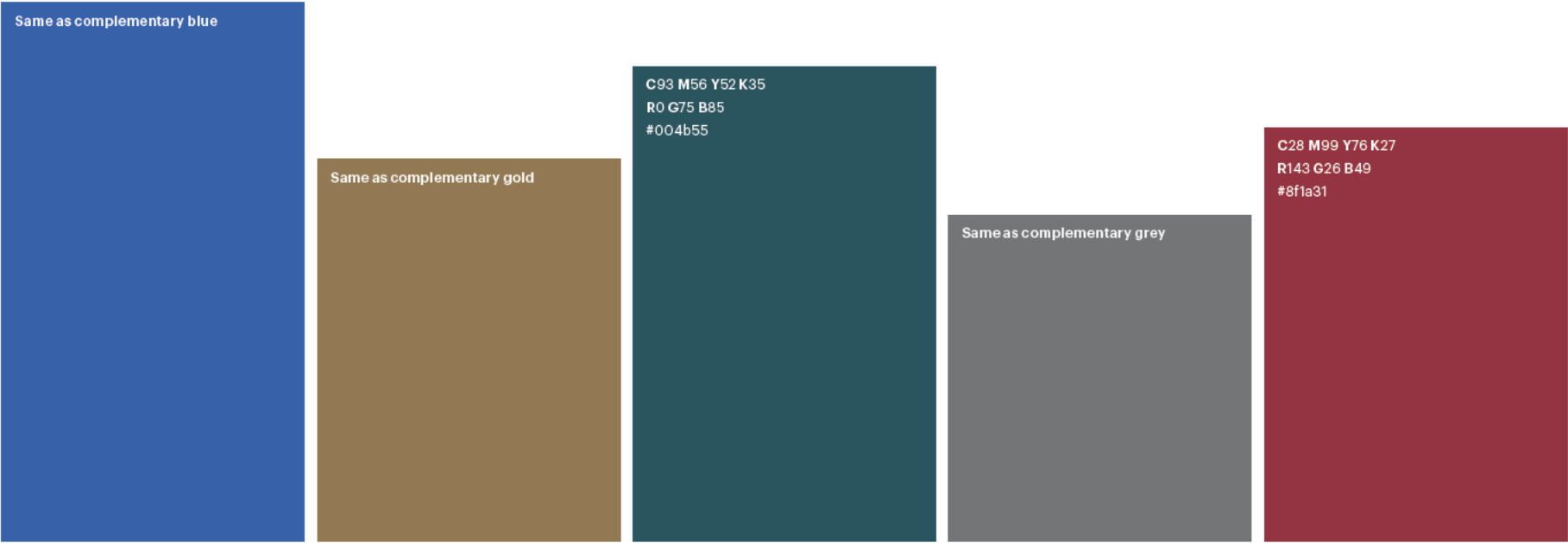


80%
60%
40%
20%
10%

State



Order from left to right





Australian Government
Department of the Prime Minister and Cabinet

BETA

BETA Presentation Template

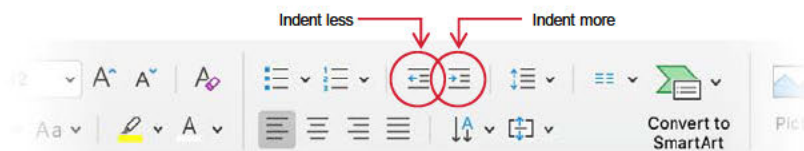
Examples and instructions



General instructions

Using the BETA report deck

- This presentation deck template contains examples of the available layouts. There are several cover pages, section dividers, tables of contents, Q&A, appendix, and thank you pages.
- There are also lots of page layouts for you to choose from that include one or a combination of:
 - Text
 - Call outs
 - Tables
 - Charts
 - Images
 - Infographics
- *Note that tables and charts are not templated – please use the [blue chart template file](#) to create these, and then copy and paste them into your presentation.*
- This template also includes a selection of BETA icons and two versions of the RCT diagram. These are all editable.
- Each master text box on each page will default to the first style shown on each of the sample layouts. To access the included styles within each text box, select the text to be changed and click the **Indent more** button (to change to the next style) or the **Indent less** button (to change to the previous style) on the home tab (shown below).



General instructions

Choosing a colour scheme

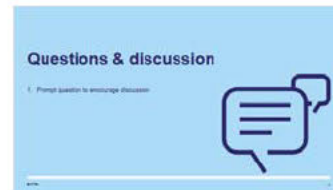
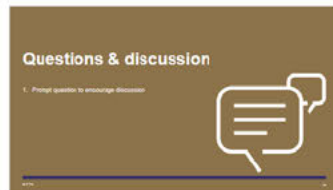
1 - all blue
(light blue subordinate)



2 - all gold
(light gold subordinate)



3 - mostly one colour
(opposite colour subordinate)



Tips:

- The light blue and light gold dividers should be subordinate – i.e. sub-section dividers – to their matching brighter colours, as in examples 1 and 2.
- Don't use *only* the light blue and/or gold slides. They aren't core BETA colours.
- You can mix and match blue and gold slides – like example 3 – but consider the hierarchy you're creating.



Australian Government
Department of the Prime Minister and Cabinet

BETA

Short presentation title here

Subtitle, description or presentation name goes here

Date or further information goes here





Australian Government
Department of the Prime Minister and Cabinet

BETA

An example of a cover with an unavoidably long title

Subtitle, description or presentation name goes here

Date or further information goes here



Australian Government
Department of the Prime Minister and Cabinet

BETA

Presentation title here

Subtitle, description or presentation name goes here

Date or further information goes here

Behavioural Economics Team of the Australian Government





Australian Government
Department of the Prime Minister and Cabinet

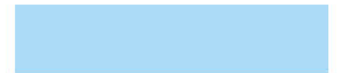
BETA

An example of a cover with a longer title over two lines

Subtitle, description or presentation name goes here

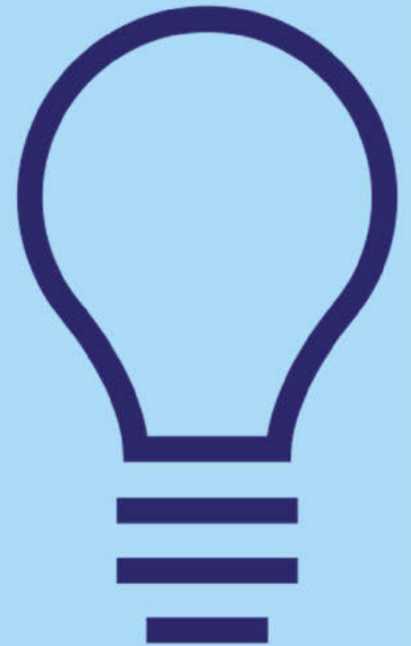
Date or further information goes here

Behavioural Economics Team of the Australian Government



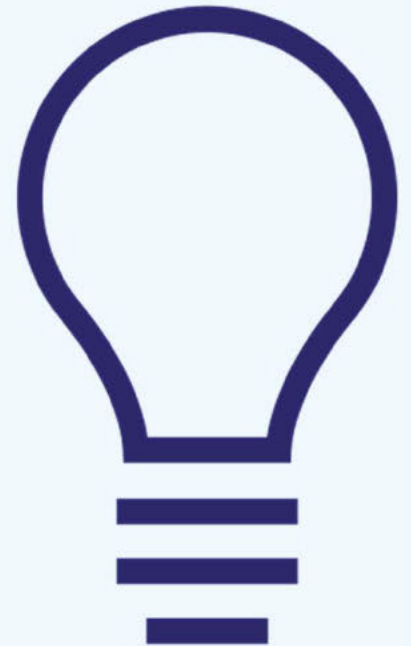
This is a section divider

When needed, a subheading can go here



This is a section divider

When needed, a subheading can go here



This is a section divider

When needed, a subheading can go here



This is a section divider

When needed, a subheading can go here

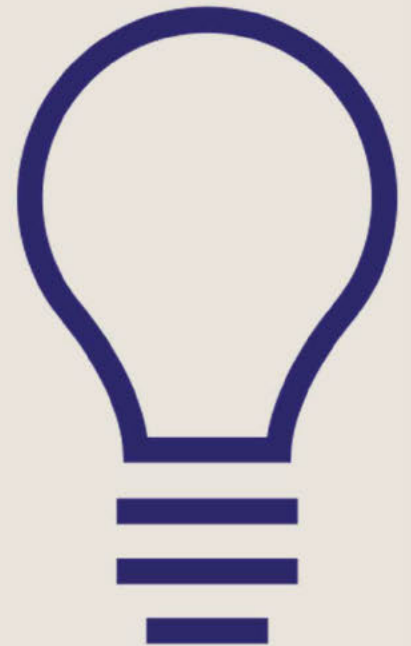


Table of contents

1. Level 1 heading
2. Level 1 heading
3. Level 1 heading
4. Level 1 heading
5. Level 1 heading

Table of contents

1. Level 1 heading
2. Level 1 heading
3. Level 1 heading
4. Level 1 heading
5. Level 1 heading

One column text

Subtitle

Subheading

Text

- Bullet 1
 - Bullet 2
 - Bullet 3

Two column text

Individual text columns

Subheading

Text

- Bullet 1
 - Bullet 2
 - Bullet 3

Subheading

Text

- Bullet 1
 - Bullet 2
 - Bullet 3

One column text with quote 1

Subtitle

Subheading

Text

- Bullet 1
 - Bullet 2
 - Bullet 3

“Quote here”

Quote attribution here

One column text with quote 2

Subtitle

Subheading

Text

- Bullet 1
 - Bullet 2
 - Bullet 3

“Quote here”

Quote attribution here

One column text + image

Subtitle

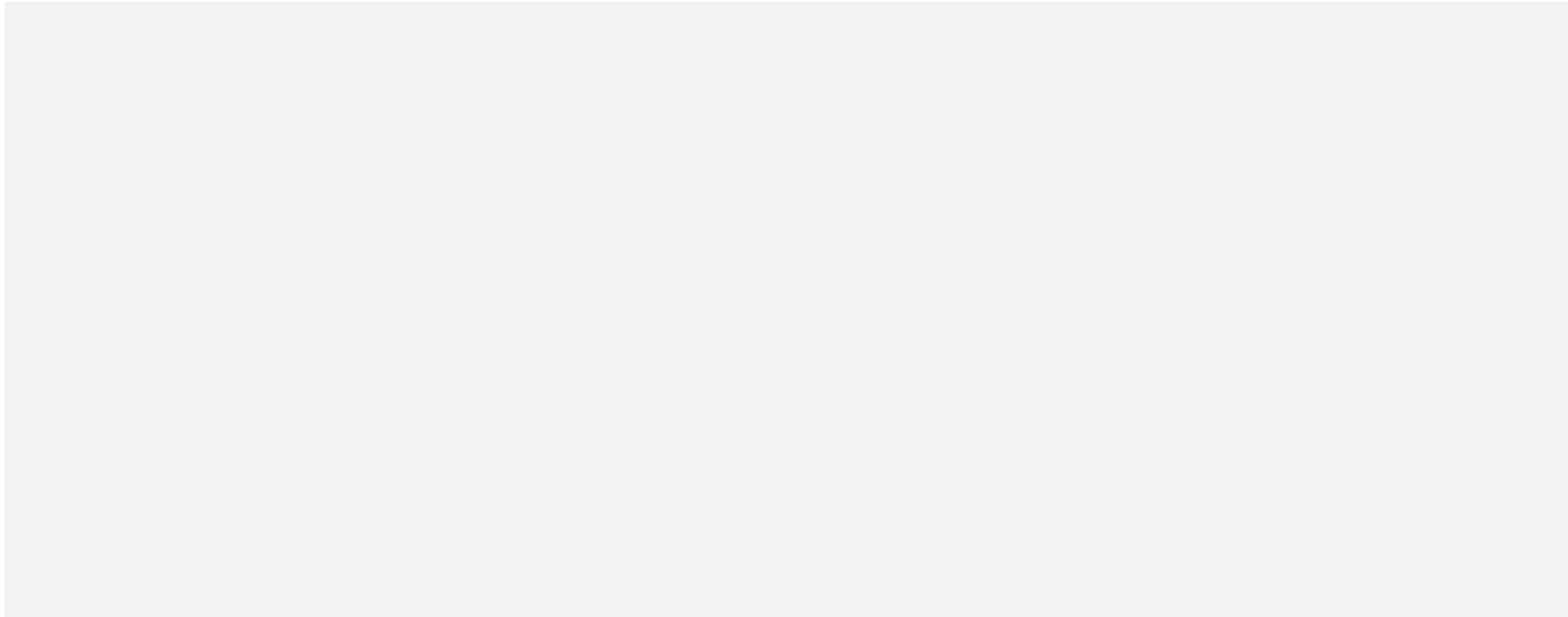
Subheading

Text

- Bullet 1
 - Bullet 2
 - Bullet 3

Image only

Subtitle



Text + table

Copy and paste this table and edit as required

Subheading

Text

- Bullet 1
 - Bullet 2
 - Bullet 3

Table title (if required)

	Strongly Disagree	Disagree	Neutral	Agree	Strongly Agree
Statement 1	0%	5%	12%	90%	75%
Statement 2	15%	1%	5%	14%	24%
Statement 3	62%	0%	30%	8%	0%
Statement 4	82%	25%	42%	5%	56%

Table only

Copy and paste this table and edit as required

Table heading if required.

	Header column 1	Header column 2	Header column 3
Row 1 Bold	Column 1 Row 1	Column 2 Row 1	00.000
Row 2 Bold	Column 1 Row 2	Column 2 Row 2	00.000
Row 3 Bold	Column 1 Row 3	Column 2 Row 3	00.000
Row 4 Bold	Column 1 Row 4	Column 2 Row 4	00.000
Row 5 Bold	Column 1 Row 5	Column 2 Row 5	00.000
Row 6 Bold	Column 1 Row 6	Column 2 Row 6	00.000
Row 7 Bold	Column 1 Row 7	Column 2 Row 7	00.000
Row 8 Bold	Column 1 Row 8	Column 2 Row 8	00.000

Notes/source if required

Slide title here in one line
Slide subtitle here if more detail is required

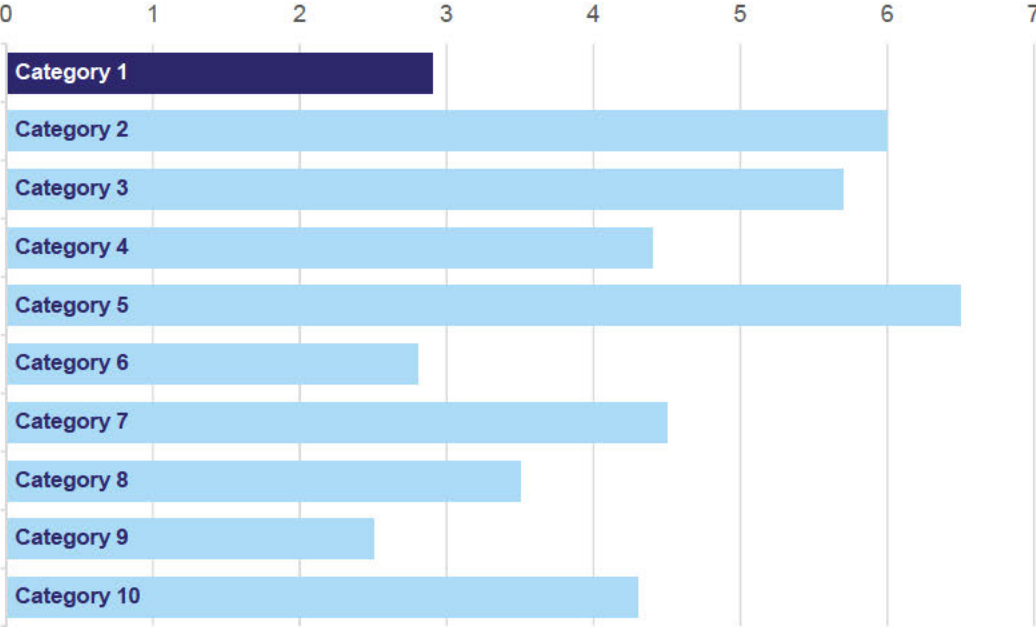
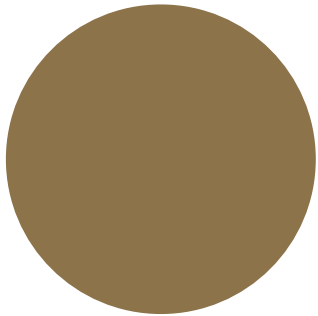


Chart title if required



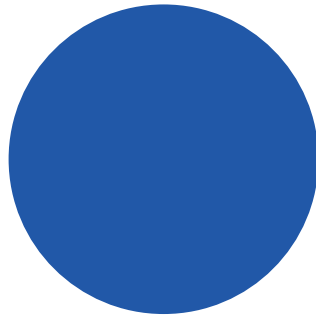
Infographic 1

Delete infographic/s and text as required



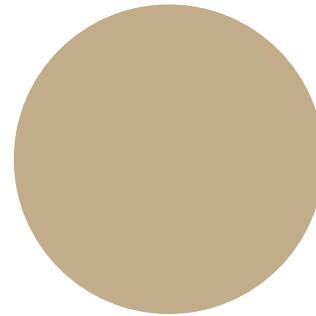
Key figure

Text or key fact goes here
and over this many lines



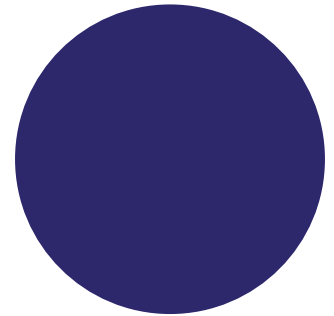
Key figure

Text or key fact goes here
and over this many lines



Key figure

Text or key fact goes here
and over this many lines

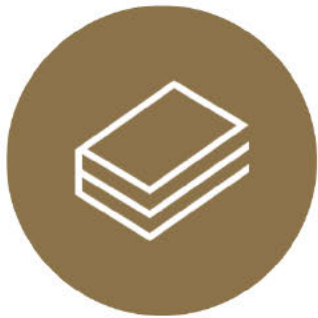


Key figure

Text or key fact goes here
and over this many lines

Infographic 1

Delete infographic/s and text as required



Key figure

Text or key fact goes here
and over this many lines



Key figure

Text or key fact goes here
and over this many lines



Key figure

Text or key fact goes here
and over this many lines

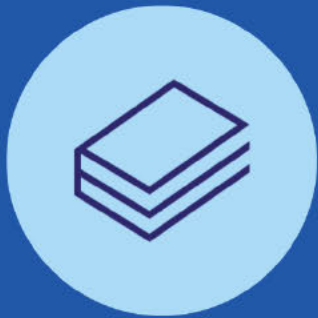


Key figure

Text or key fact goes here
and over this many lines

Infographic 2

Delete infographic/s and text as required



Key figure

Text or key fact goes here
and over this many lines



Key figure

Text or key fact goes here
and over this many lines



Key figure

Text or key fact goes here
and over this many lines



Key figure

Text or key fact goes here
and over this many lines

Questions & discussion

1. Prompt question to encourage discussion



Questions & discussion

1. Prompt question to encourage discussion



Thank you

General enquiries beta@pmc.gov.au

Media enquiries media@pmc.gov.au

Find out more pmc.gov.au/beta

Behavioural Economics Team of the Australian Government

Thank you

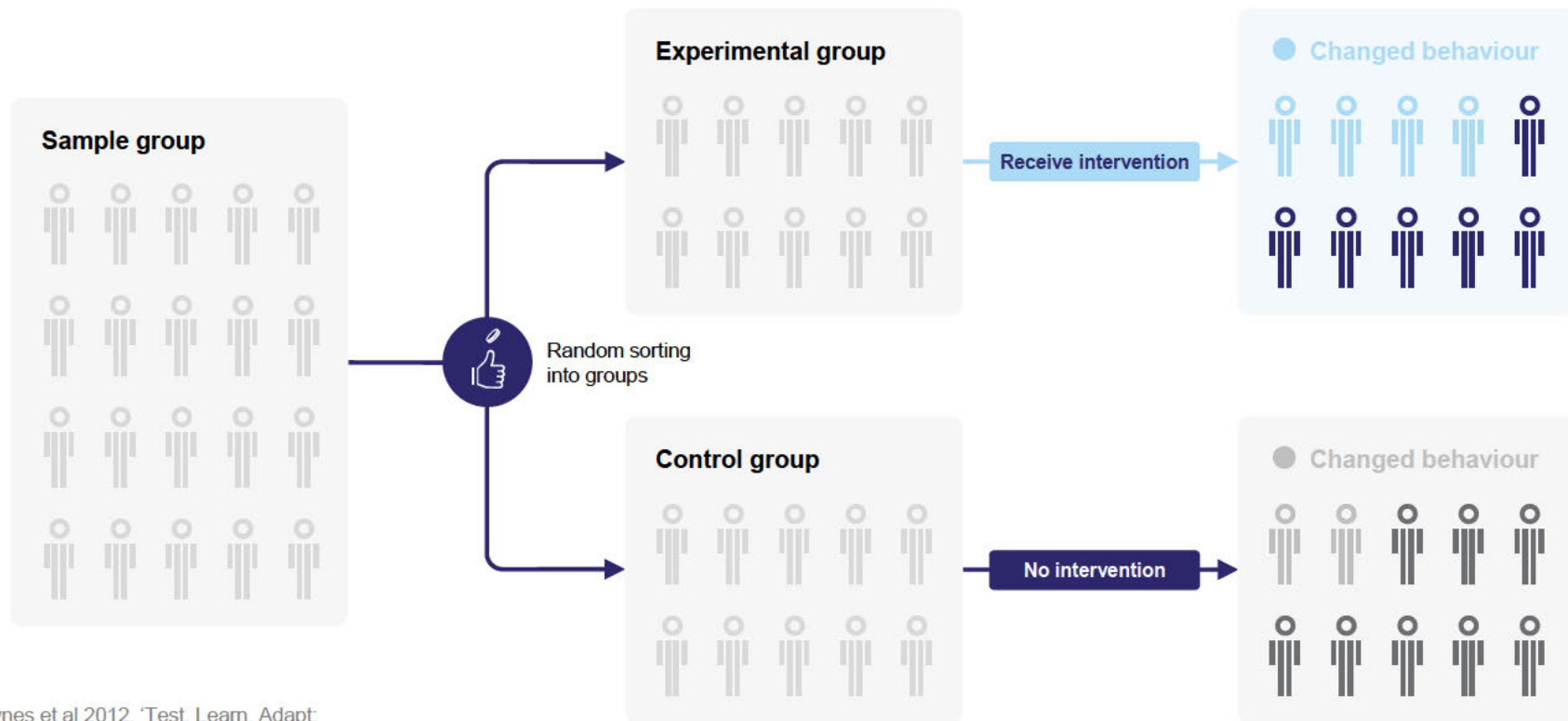
General enquiries beta@pmc.gov.au

Media enquiries media@pmc.gov.au

Find out more pmc.gov.au/beta

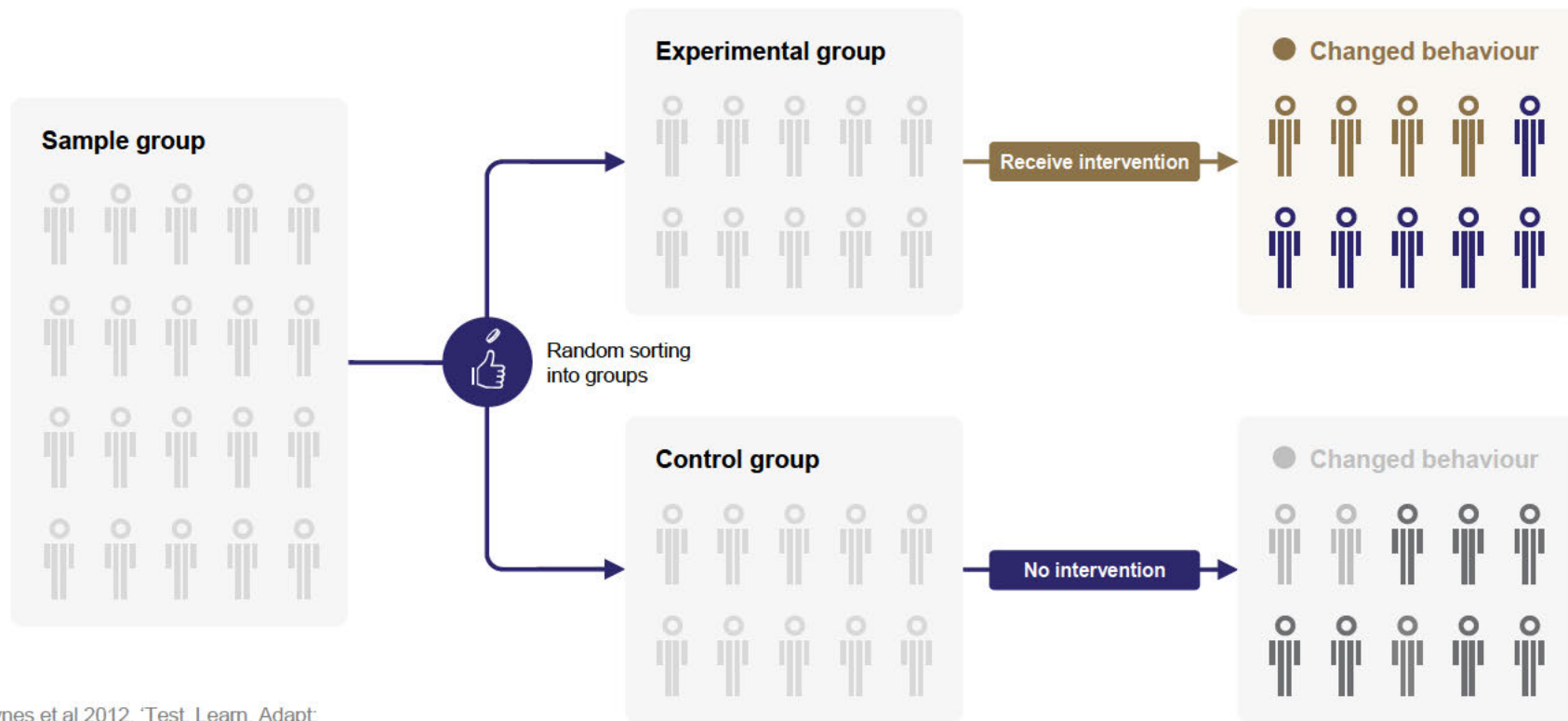
Behavioural Economics Team of the Australian Government

Randomised Controlled Trials (RCTs)



Source: Haynes et al 2012, 'Test, Learn, Adapt: Developing Public Policy with Randomised controlled Trials'

Randomised Controlled Trials (RCTs)



Source: Haynes et al 2012, 'Test, Learn, Adapt: Developing Public Policy with Randomised controlled Trials'

Graphic library



circle_1



circle_2



circle_3



underline



brain



conversation



data



document



idea

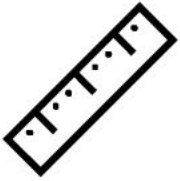


figure 1



figure 2

Graphic library



measurement



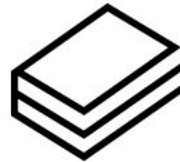
money



news



podcast



reports



research



results



thinking

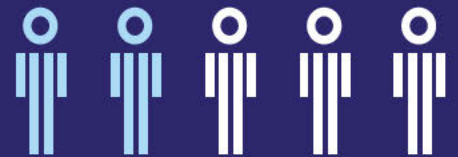
Slide title here in one line

Slide subtitle here if more detail is required

Subheading

Text

- Bullet 1
 - Bullet 2



2/5 people

Text or key fact goes here
and over this many lines

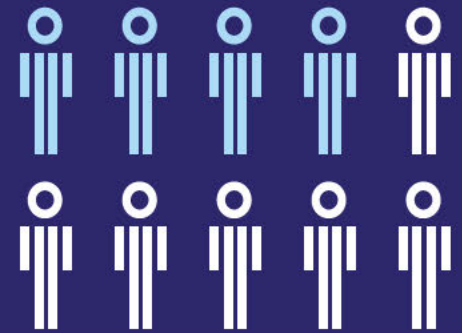
Slide title here in one line

Slide subtitle here if more detail is required

Subheading goes here

Text liquae dolorem et ut estrum facitius et re, non rerum id et pratisquia inum dolorpo remporioste labo. Ut elit eribusae consequam, qui blameni musciisciae parchil libernatus, torat.

- **Bullet 1** ur ma nus, oditiori optatendae nam aut duntiis dolorpore volendi ssiminv
 - **Bullet 2** erundae erumquunt aut omni imolend istotatur audisim usamene molorro incto qui illesequi ut parum faces exceatempore solupta tempore icatecu sanihil iquiam, tem hillam.



4/10 people

Text or key fact goes here
and over this many lines

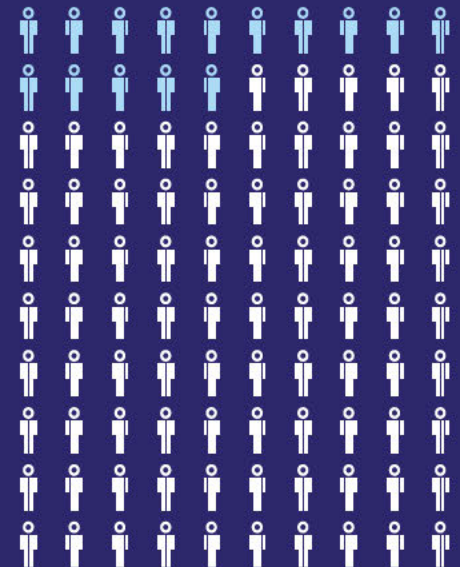
Key statistics

The following page contains graphics to be edited and reused for key stats for 5, 10 and 100 people

Subheading

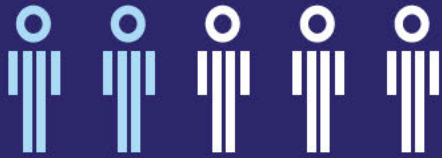
Text

- Bullet 1
 - Bullet 2
 - Bullet 3



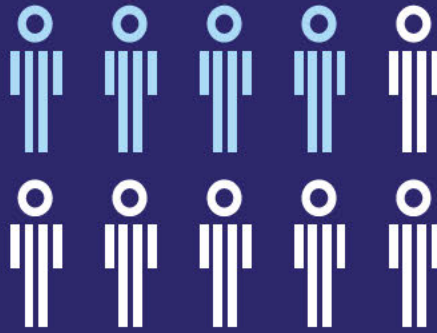
15% people

Text or key fact goes here
and over this many lines



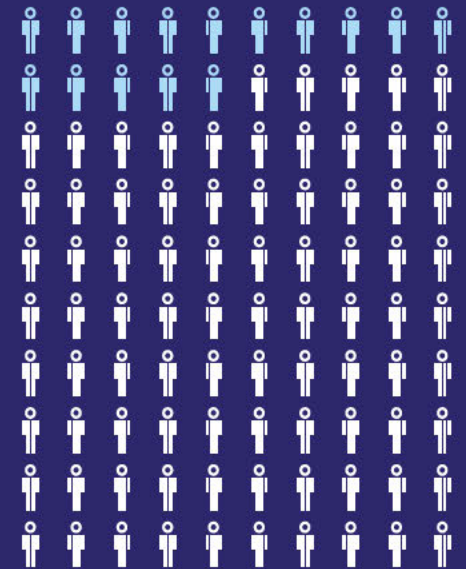
2/5 people

Text or key fact goes here
and over this many lines



4/10 people

Text or key fact goes here
and over this many lines

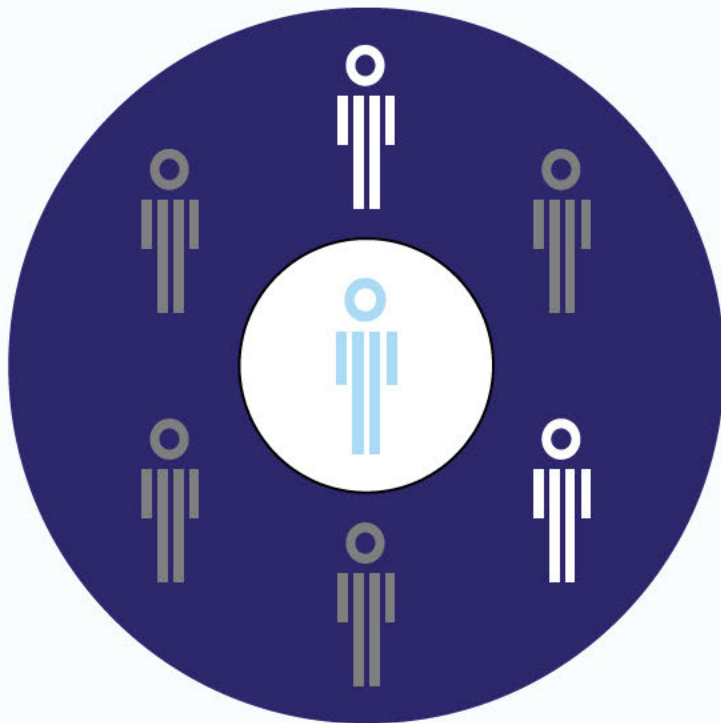


15% people

Text or key fact goes here
and over this many lines

Slide title here in one line

Slide subtitle here if more detail is required



Key fact or interesting statistic goes here

This slide works as a stand-out slide, so the type is a little bigger than usual. It can help to draw attention to key information, or help pace out your document.

Caption and/or source goes here in 8pt where needed.

Slide title here in one line

Slide subtitle here if more detail is required





BETA Presentation Template

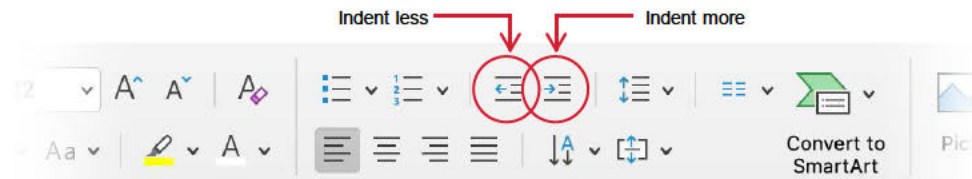
Examples and instructions



General instructions

Using the BETA report deck

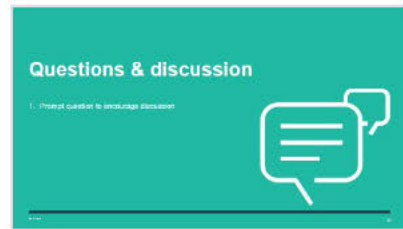
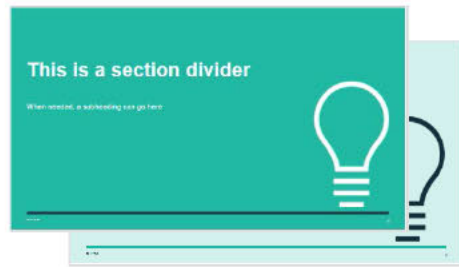
- This presentation deck template contains examples of the available layouts. There are several cover pages, section dividers, tables of contents, Q&A, appendix, and thank you pages.
- There are also lots of page layouts for you to choose from that include one or a combination of:
 - Text
 - Call outs
 - Tables
 - Charts
 - Images
 - Infographics
- *Note that tables and charts are not templated – please use the [green chart template file](#) to create these, and then copy and paste them into your presentation.*
- This template also includes a selection of BETA icons and two versions of the RCT diagram. These are all editable.
- Each master text box on each page will default to the first style shown on each of the sample layouts. To access the included styles within each text box, select the text to be changed and click the **Indent more** button (to change to the next style) or the **Indent less** button (to change to the previous style) on the home tab (shown below).



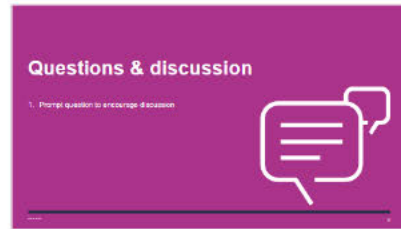
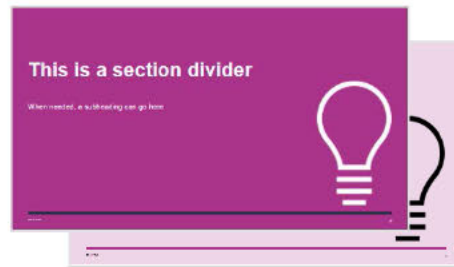
General instructions

Choosing a colour scheme

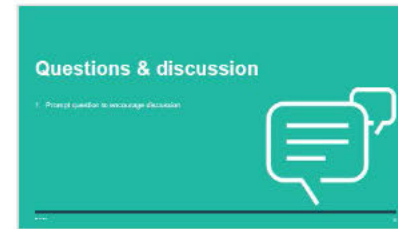
1 - all green
(light green subordinate)



2 - all pink
(light pink subordinate)



3 - mostly one colour
(opposite colour subordinate)



Tips:

- The light green and light pink dividers should be subordinate – i.e. sub-section dividers – to their matching brighter colours, as in examples 1 and 2.
- Don't use *only* the light green and/or pink slides. They aren't core BETA colours.
- You can mix and match green and pink slides – like example 3 – but consider the hierarchy you're creating.



Short presentation title here

Subtitle, description or presentation name goes here

Date or further information goes here

■

■

■



An example of a cover with an unavoidably long title

Subtitle, description or presentation name goes here

Date or further information goes here



Presentation title here

Subtitle, description or presentation name goes here

Date or further information goes here





An example of a cover with a longer title over two lines

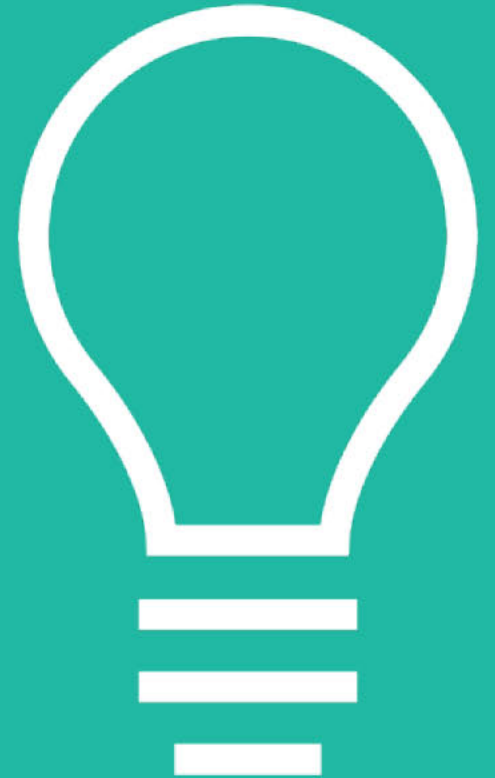
Subtitle, description or presentation name goes here

Date or further information goes here



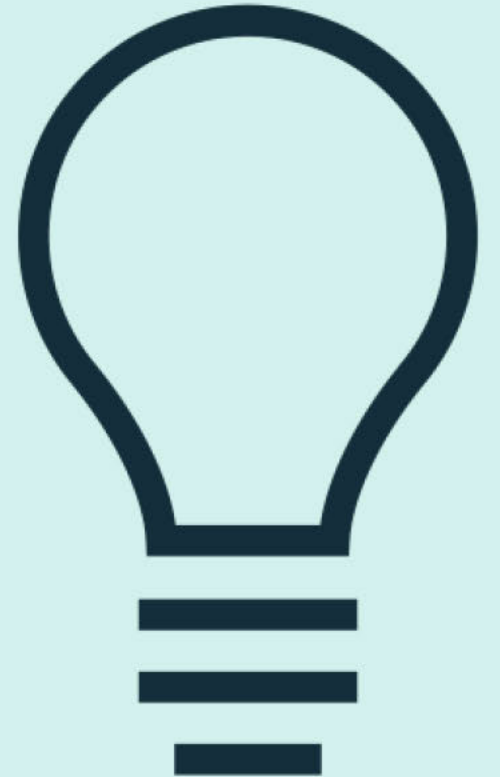
This is a section divider

When needed, a subheading can go here



This is a section divider

When needed, a subheading can go here



This is a section divider

When needed, a subheading can go here



This is a section divider

When needed, a subheading can go here

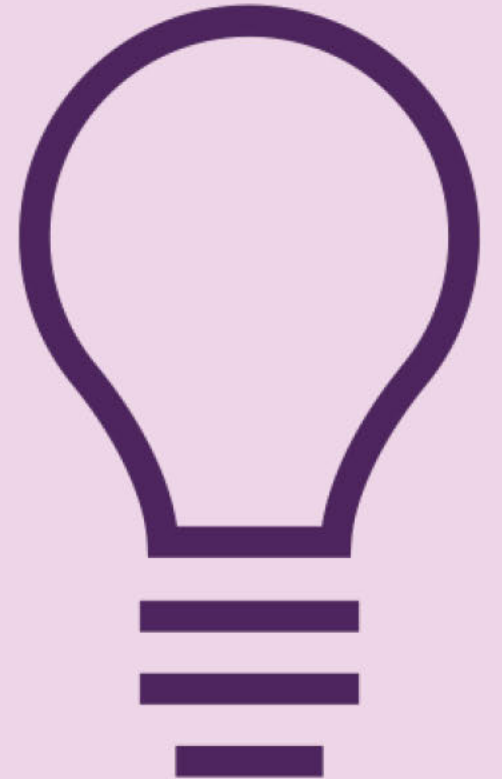


Table of contents

1. Level 1 heading
2. Level 1 heading
3. Level 1 heading
4. Level 1 heading
5. Level 1 heading

Table of contents

1. Level 1 heading
2. Level 1 heading
3. Level 1 heading
4. Level 1 heading
5. Level 1 heading

One column text

Subtitle

Subheading

Text

- Bullet 1
 - Bullet 2
 - Bullet 3

Two column text

Individual text columns

Subheading

Text

- Bullet 1
 - Bullet 2
 - Bullet 3

Subheading

Text

- Bullet 1
 - Bullet 2
 - Bullet 3

One column text with quote 1

Subtitle

Subheading

Text

- Bullet 1
 - Bullet 2
 - Bullet 3

“Quote here”

Quote attribution here

One column text with quote 2

Subtitle

Subheading

Text

- Bullet 1
 - Bullet 2
 - Bullet 3

“Quote here”

Quote attribution here

One column text + image

Subtitle

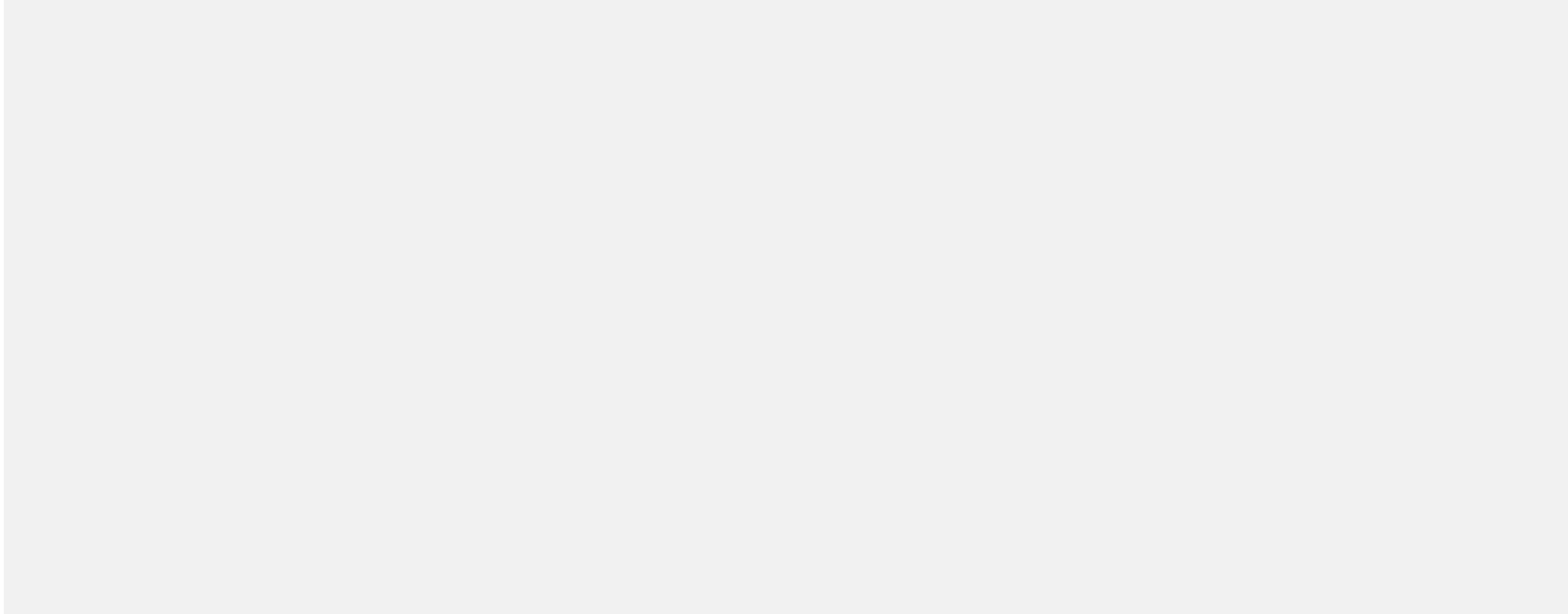
Subheading

Text

- Bullet 1
 - Bullet 2
 - Bullet 3

Image only

Subtitle



Text + table

Copy and paste this table and edit as required

Subheading

Text

- Bullet 1
 - Bullet 2
 - Bullet 3

Table title (if required)

	Strongly Disagree	Disagree	Neutral	Agree	Strongly Agree
Statement 1	0%	5%	12%	90%	75%
Statement 2	15%	1%	5%	14%	24%
Statement 3	62%	0%	30%	8%	0%
Statement 4	82%	25%	42%	5%	56%

Table only

Copy and paste this table and edit as required

Table heading if required.

	Header column 1	Header column 2	Header column 3
Row 1 Bold	Column 1 Row 1	Column 2 Row 1	00.000
Row 2 Bold	Column 1 Row 2	Column 2 Row 2	00.000
Row 3 Bold	Column 1 Row 3	Column 2 Row 3	00.000
Row 4 Bold	Column 1 Row 4	Column 2 Row 4	00.000
Row 5 Bold	Column 1 Row 5	Column 2 Row 5	00.000
Row 6 Bold	Column 1 Row 6	Column 2 Row 6	00.000
Row 7 Bold	Column 1 Row 7	Column 2 Row 7	00.000
Row 8 Bold	Column 1 Row 8	Column 2 Row 8	00.000

Notes/source if required

Slide title here in one line

Slide subtitle here if more detail is required

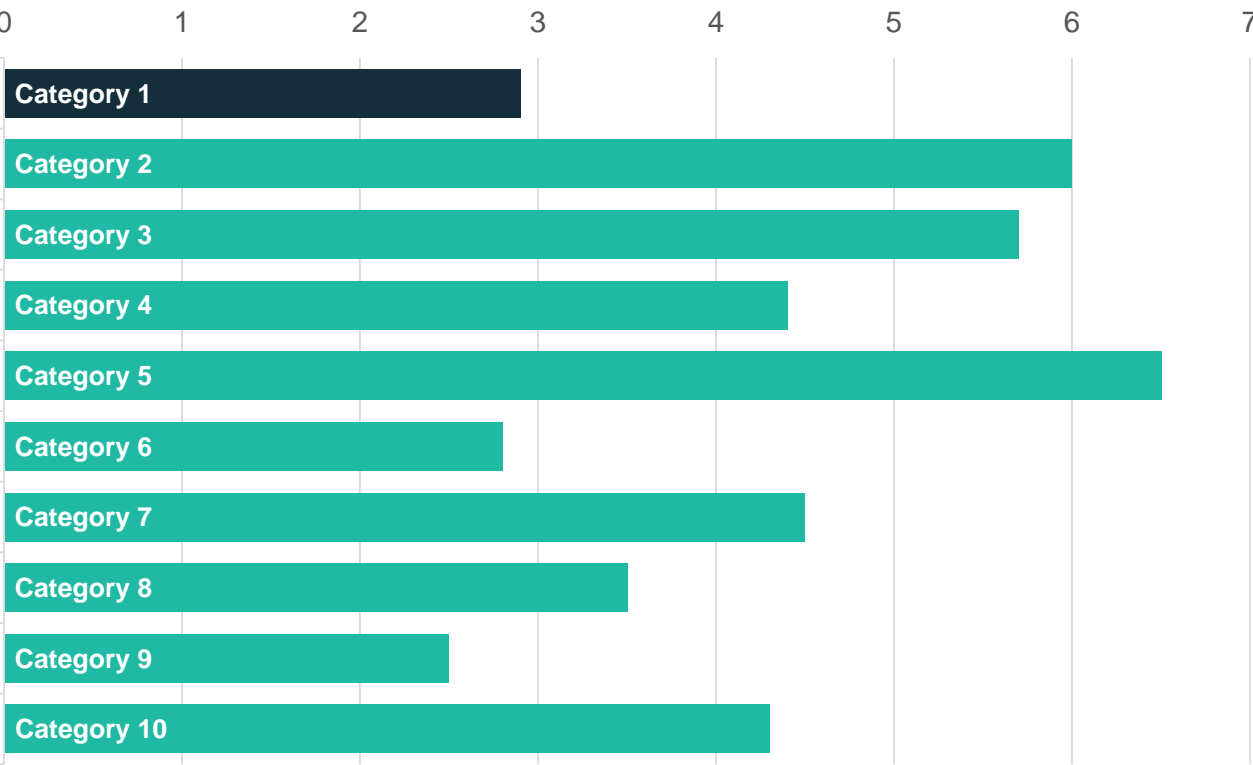
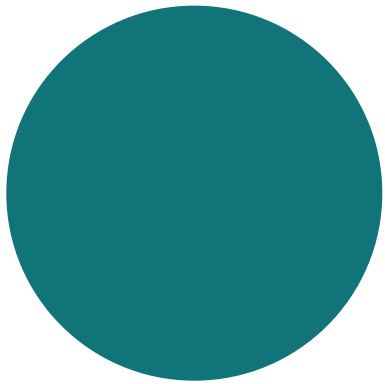


Chart title if required



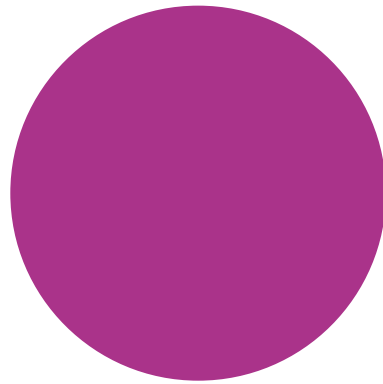
Infographic 1

Delete infographic/s and text as required



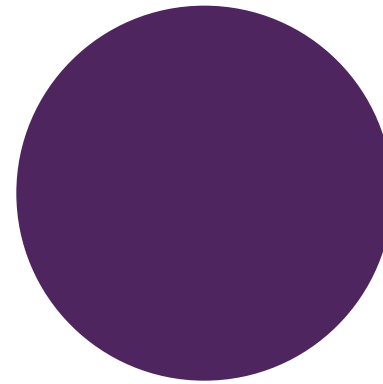
Key figure

Text or key fact goes here
and over this many lines



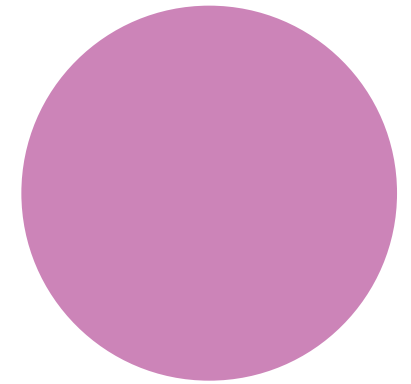
Key figure

Text or key fact goes here
and over this many lines



Key figure

Text or key fact goes here
and over this many lines

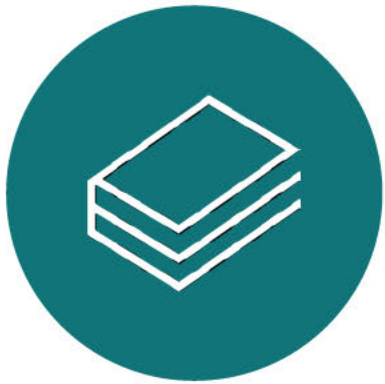


Key figure

Text or key fact goes here
and over this many lines

Infographic 1

Delete infographic/s and text as required



Key figure

Text or key fact goes here
and over this many lines



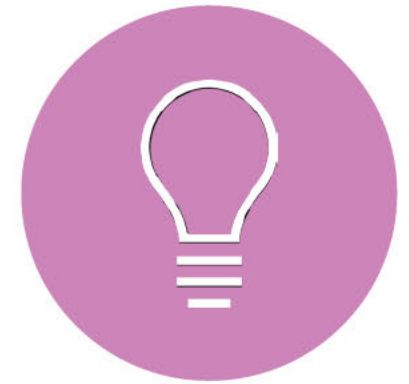
Key figure

Text or key fact goes here
and over this many lines



Key figure

Text or key fact goes here
and over this many lines



Key figure

Text or key fact goes here
and over this many lines

Infographic 2

Delete infographic/s and text as required



Key figure

Text or key fact goes here
and over this many lines



Key figure

Text or key fact goes here
and over this many lines



Key figure

Text or key fact goes here
and over this many lines



Key figure

Text or key fact goes here
and over this many lines

Questions & discussion

1. Prompt question to encourage discussion



Questions & discussion

1. Prompt question to encourage discussion



Thank you

General enquiries beta@pmc.gov.au

Media enquiries media@pmc.gov.au

Find out more pmc.gov.au/beta

Behavioural Economics Team of the Australian Government

Thank you

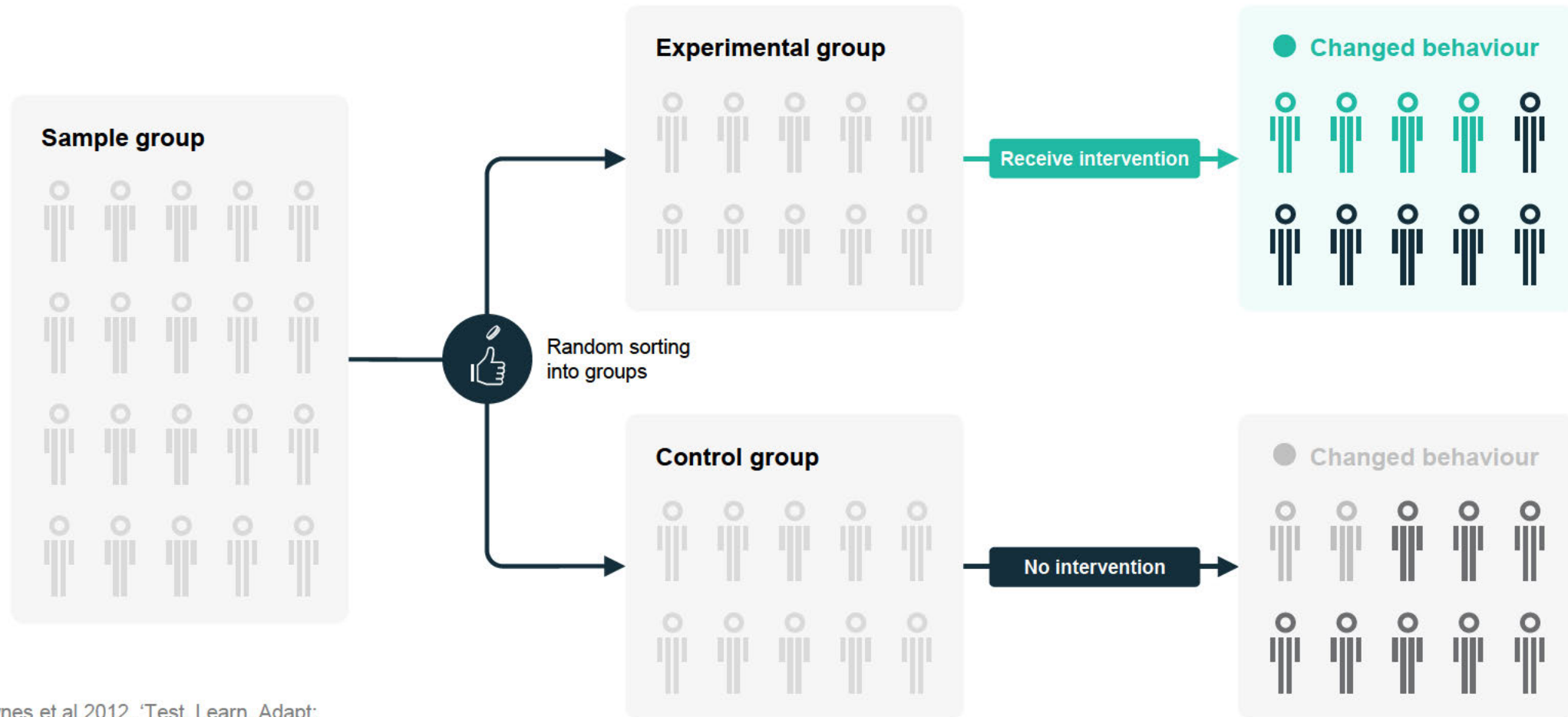
General enquiries beta@pmc.gov.au

Media enquiries media@pmc.gov.au

Find out more pmc.gov.au/beta

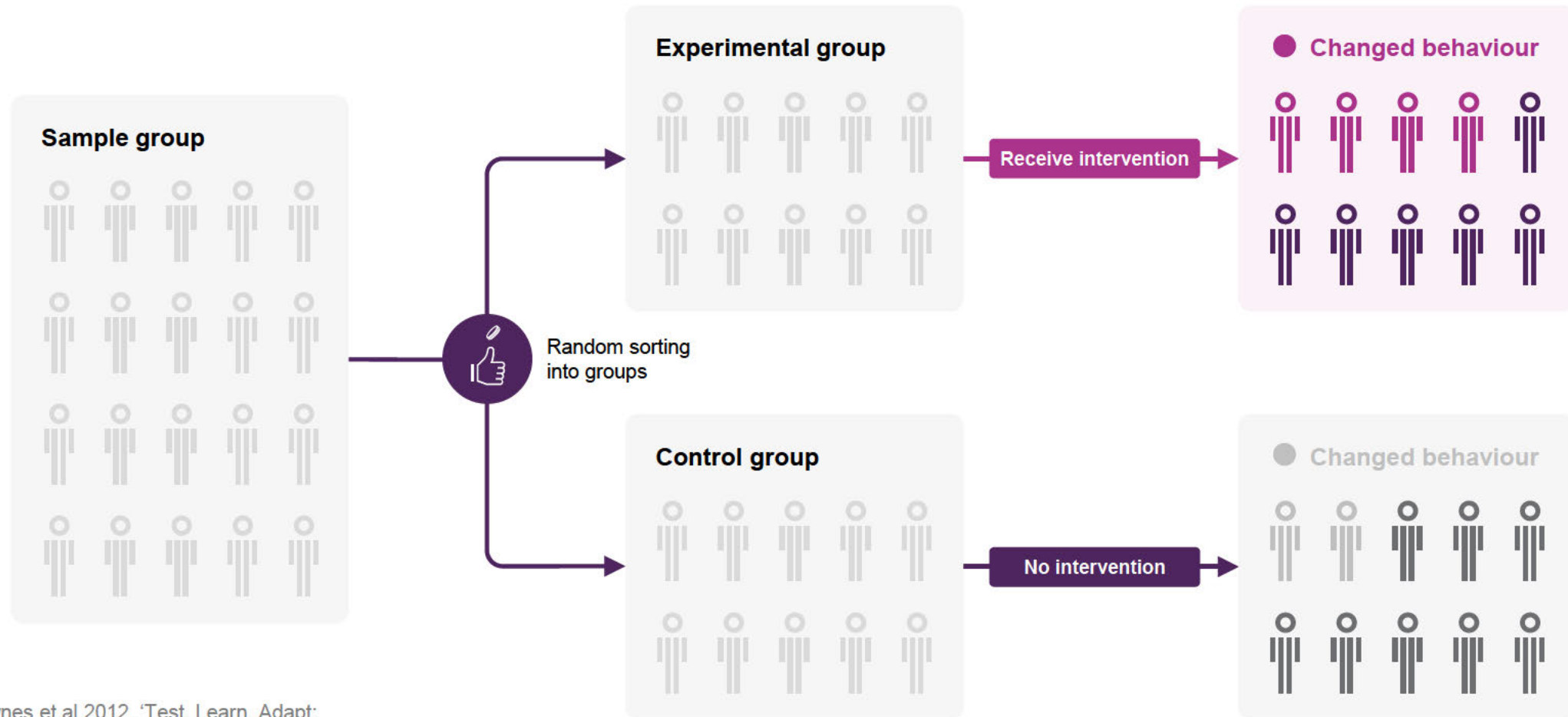
Behavioural Economics Team of the Australian Government

Randomised Controlled Trials (RCTs)



Source: Haynes et al 2012, 'Test, Learn, Adapt: Developing Public Policy with Randomised controlled Trials'

Randomised Controlled Trials (RCTs)



Source: Haynes et al 2012, 'Test, Learn, Adapt: Developing Public Policy with Randomised controlled Trials'

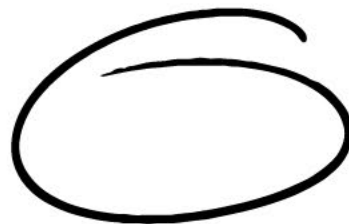
Graphic library



circle_1



circle_2



circle_3



underline



brain



conversation



data



document



idea

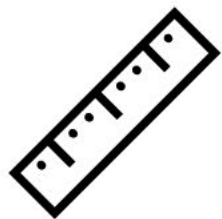


figure 1



figure 2

Graphic library



measurement



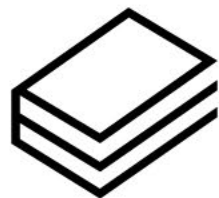
money



news



podcast



reports



research



results



thinking

Slide title here in one line

Slide subtitle here if more detail is required

Subheading

Text

- Bullet 1
 - Bullet 2



2/5 people

Text or key fact goes here
and over this many lines

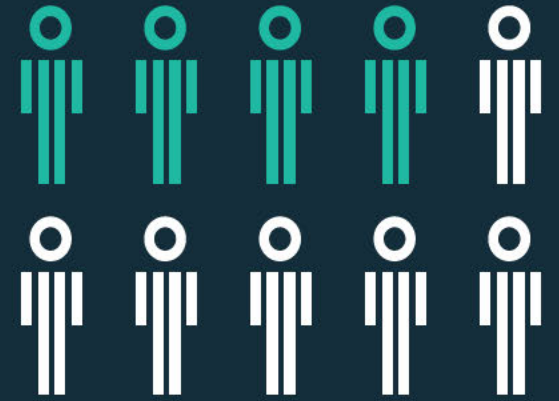
Slide title here in one line

Slide subtitle here if more detail is required

Subheading goes here

Text liquae dolorem et ut estrum facitius et re, non rerum id et pratisquia inum dolorpo remporioste labo. Ut elit eribusae consequam, qui blameni musciisciae parchil libernatus, torat.

- **Bullet 1** ur ma nus, oditori optatendae nam aut duntiis dolorpore volendi ssiminv
 - **Bullet 2** erundae erumquunt aut omni imolend istotatur audisim usamene molorro incto qui illesequi ut parum faces exceatempore solupta tempore icatecu sanihil iquiam, tem hillam.



4/10 people

Text or key fact goes here
and over this many lines

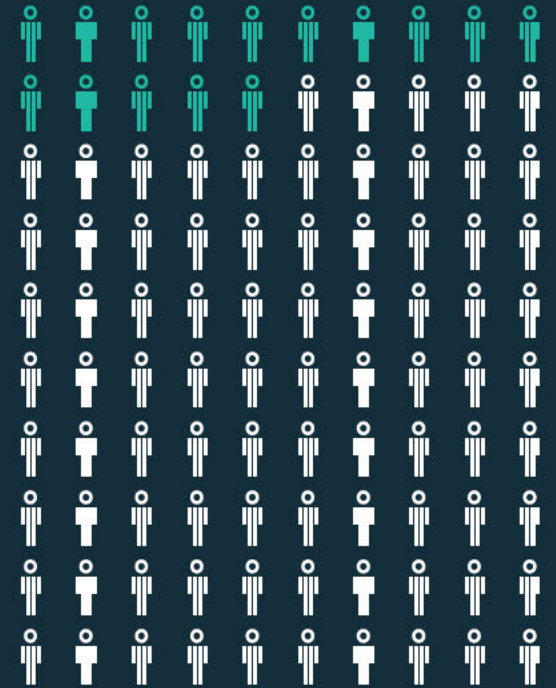
Key statistics

The following page contains graphics to be edited and reused for key stats for 5, 10 and 100 people

Subheading goes here

Text liquae dolorem et ut estrum facitius et re, non rerum id et pratisquia inum dolorpo remporioste labo. Ut elit eribusae consequam, qui blameni musciisciae parchil libernatus, torat.

- **Bullet 1** ur ma nus, oditori optatendae nam aut duntiis dolorpore volendi ssiminv
 - **Bullet 2** erundae erumquunt aut omni imolend istotatur audisim usamene molorro incto qui illesequi ut parum faces exceatempore solupta tempore icatecu sanihil iquiam, tem hillam.



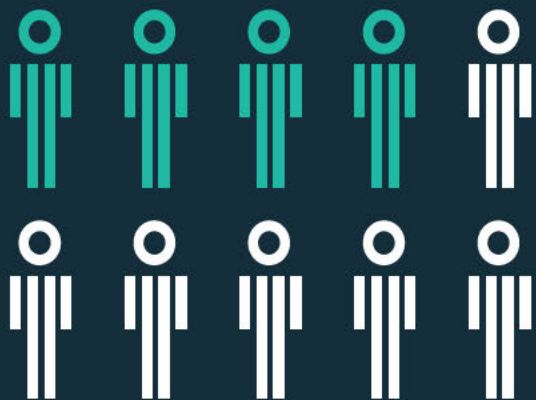
15% people

Text or key fact goes here
and over this many lines



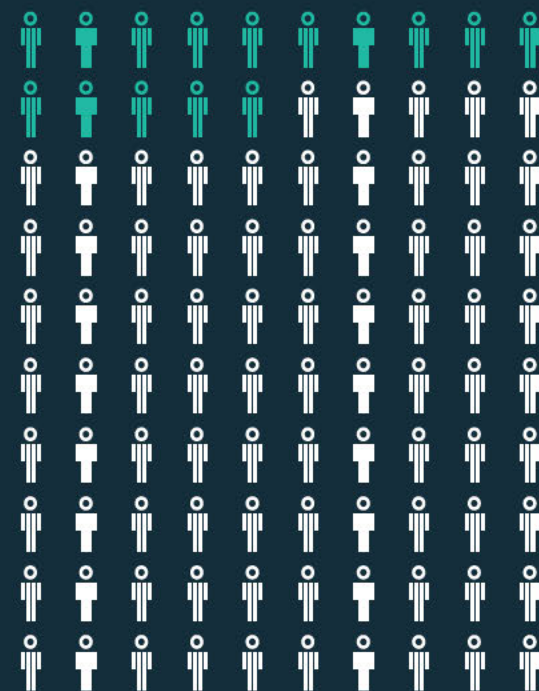
2/5 people

Text or key fact goes here
and over this many lines



4/10 people

Text or key fact goes here
and over this many lines

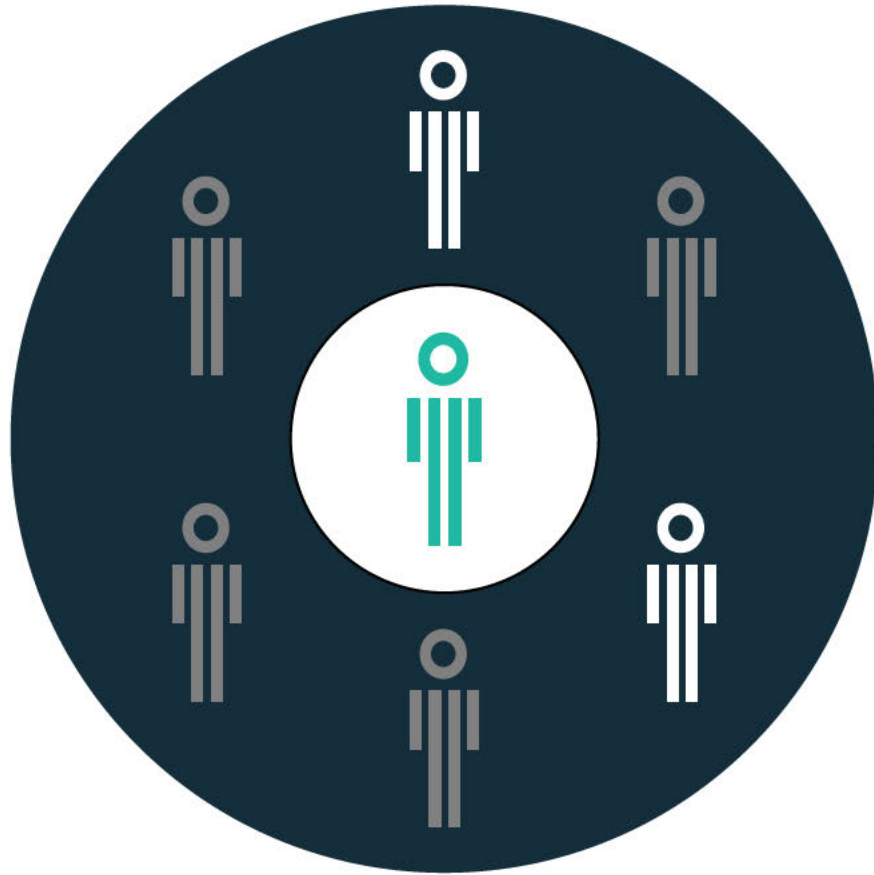


15% people

Text or key fact goes here
and over this many lines

Slide title here in one line

Slide subtitle here if more detail is required



Key fact or interesting statistic goes here

This slide works as a stand-out slide, so the type is a little bigger than usual. It can help to draw attention to key information, or help pace out your document.

Caption and/or source goes here in 8pt where needed.

Slide title here in one line

Slide subtitle here if more detail is required





BETA Report Template

Examples and instructions

1

2

3

General instructions

Using the BETA report deck

This presentation deck template contains examples of the available layouts. There are several cover pages, section dividers, tables of contents, Q&A, appendix, and thank you pages.

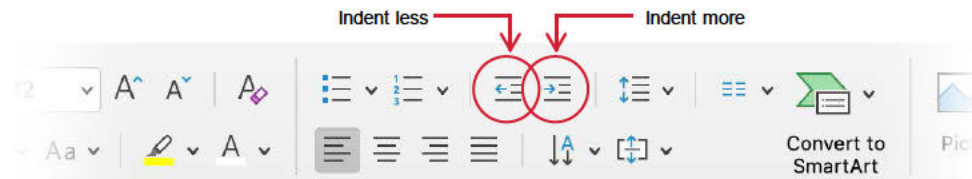
There are also lots of page layouts for you to choose from that include one or a combination of:

- Text
- Call outs
- Tables
- Charts
- Images
- Infographics

Note that tables and charts are not templated – please use the [blue chart template file](#) to create these, and then copy and paste them into your presentation.

This template also includes a selection of BETA icons and two versions of the RCT diagram. These are all editable.

Each master text box on each page will default to the first style shown on each of the sample layouts. To access the included styles within each text box, select the text to be changed and click the **Indent more** button (to change to the next style) or the **Indent less** button (to change to the previous style) on the home tab (shown below).



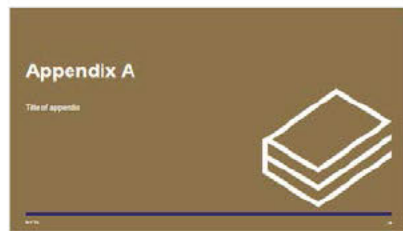
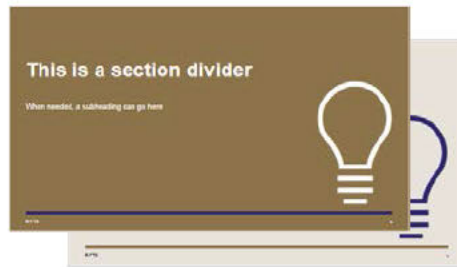
General instructions

Choosing a colour scheme

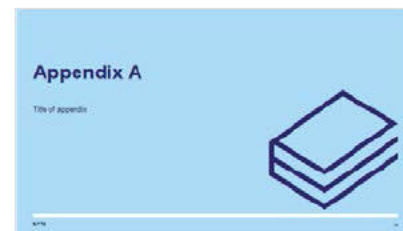
1 - all blue
(light blue subordinate)



2 - all gold
(light gold subordinate)



3 - mostly one colour
(opposite colour subordinate)



Tips:

- The light blue and light gold dividers should be subordinate – i.e. sub-section dividers – to their matching brighter colours, as in examples 1 and 2.
- Don't use *only* the light blue and/or gold slides. They aren't core BETA colours.
- You can mix and match blue and gold slides – like example 3 – but consider the hierarchy you're creating.



Short presentation title here

Subtitle, description or presentation name goes here

Date or further information goes here

1

2

3



An example of a cover with an unavoidably long title

Subtitle, description or presentation name goes here

Date or further information goes here





An example of a cover with a long title (can also be used for short)

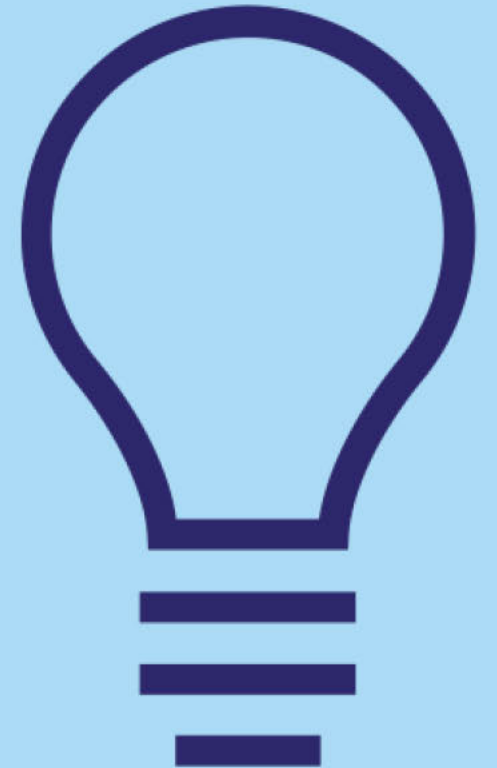
Subtitle, description or presentation name goes here

Date or further information goes here



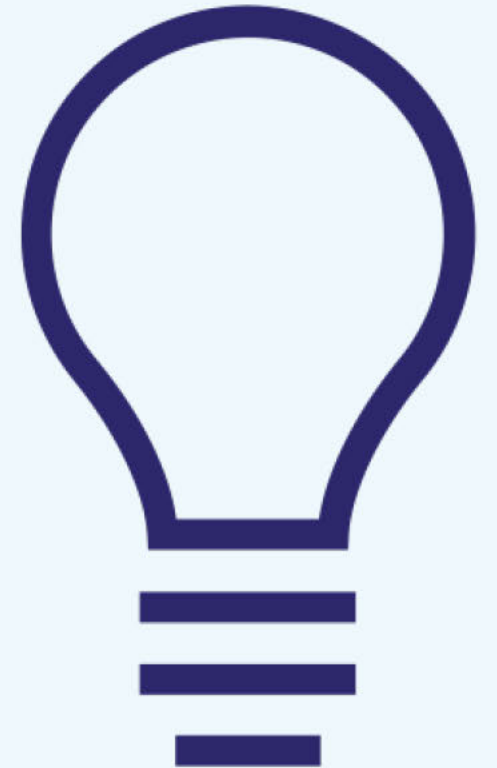
This is a section divider

When needed, a subheading can go here



This is a section divider

When needed, a subheading can go here



This is a section divider

When needed, a subheading can go here



This is a section divider

When needed, a subheading can go here

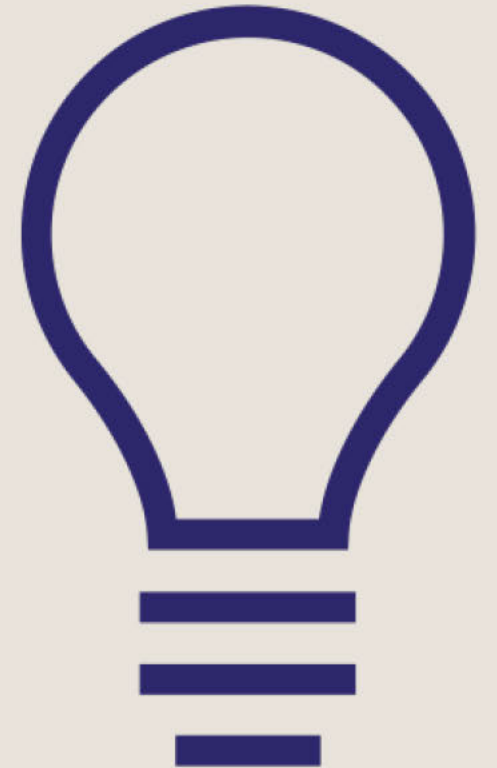


Table of contents

1. Level 1 heading	3
A. Level 2 heading	4

Table of contents

1. Level 1 heading	3
A. Level 2 heading	4

One column text

Continuous text columns

Introduction

Subheading

Text

- Bullet 1
 - Bullet 2

Two column text

Continuous text columns

Introduction

Subheading

Text

- Bullet 1
 - Bullet 2

Three column text

Continuous text columns

Introduction

Subheading

Text

- Bullet 1
 - Bullet 2

Four column text

Individual text columns

Subheading

Text

- Bullet 1
- Bullet 2

Subheading

Text

- Bullet 1
- Bullet 2

Subheading

Text

- Bullet 1
- Bullet 2

Subheading

Text

- Bullet 1
- Bullet 2

Two column text with quote 1

Continuous text columns

Introduction

Subheading

Text

- Bullet 1
 - Bullet 2

Quote here

Quote attribution

Two column text with quote 2

Continuous text columns

Introduction

Subheading

Text

- Bullet 1
 - Bullet 2

Quote here

Quote attribution

One column text + image

Subtitle

Introduction

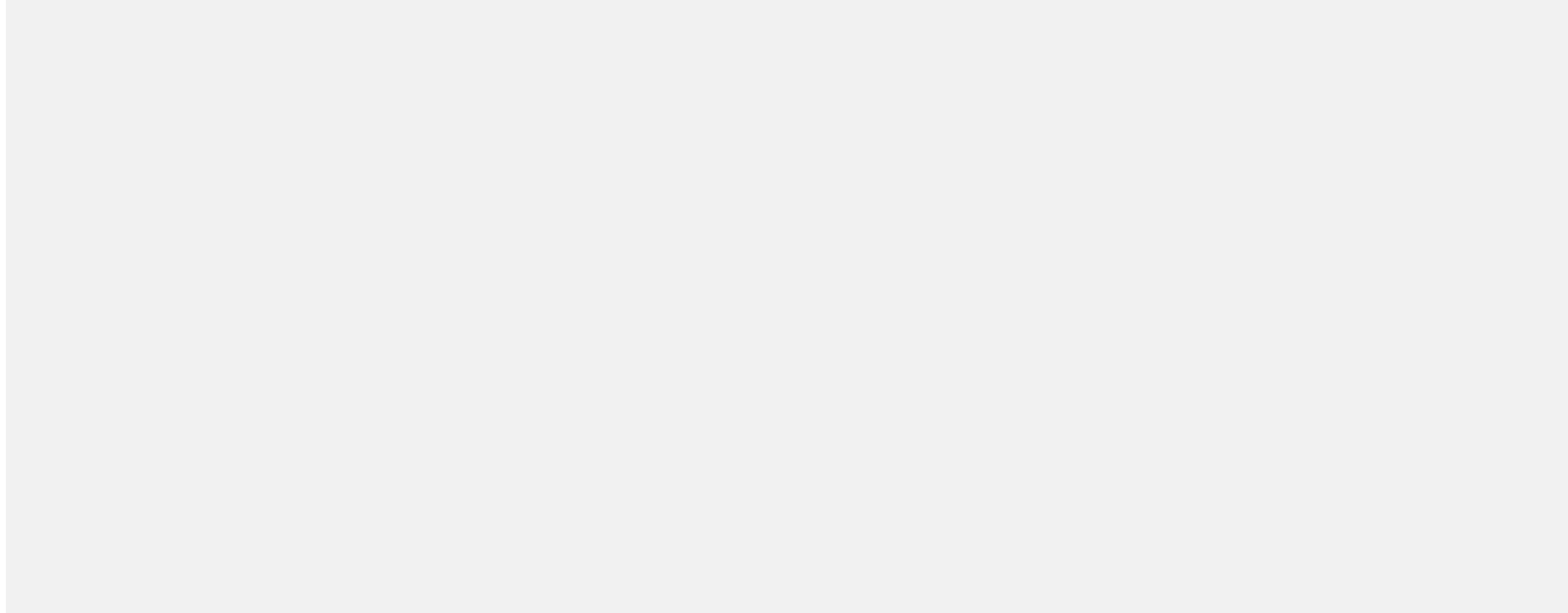
Subheading

Text

- Bullet 1
 - Bullet 2

Image only

Subtitle goes here if required



Text + table

Copy and paste this table and edit as required

Introduction

Subheading

Text

- Bullet 1
 - Bullet 2

Table title (if required)

	Strongly Disagree	Disagree	Neutral	Agree	Strongly Agree
Statement 1	0%	5%	12%	90%	75%
Statement 2	15%	1%	5%	14%	24%
Statement 3	62%	0%	30%	8%	0%
Statement 4	82%	25%	42%	5%	56%

Table only

Copy and paste this table and edit as required

Table heading if required.

	Header column 1	Header column 2	Header column 3	Header column 4
Row 1 Bold	Column 1 Row 1	Column 2 Row 1	Column 3 Row 1	00.000
Row 2 Bold	Column 1 Row 2	Column 2 Row 2	Column 3 Row 2	00.000
Row 3 Bold	Column 1 Row 3	Column 2 Row 3	Column 3 Row 3	00.000
Row 4 Bold	Column 1 Row 4	Column 2 Row 4	Column 3 Row 4	00.000
Row 5 Bold	Column 1 Row 5	Column 2 Row 5	Column 3 Row 5	00.000
Row 6 Bold	Column 1 Row 6	Column 2 Row 6	Column 3 Row 6	00.000
Row 7 Bold	Column 1 Row 7	Column 2 Row 7	Column 3 Row 7	00.000
Row 8 Bold	Column 1 Row 8	Column 2 Row 8	Column 3 Row 8	00.000
Row 9 Bold	Column 1 Row 9	Column 2 Row 9	Column 3 Row 9	00.000

Notes/source if required

Chart and key figure

Copy and paste chart and key figure and edit as required

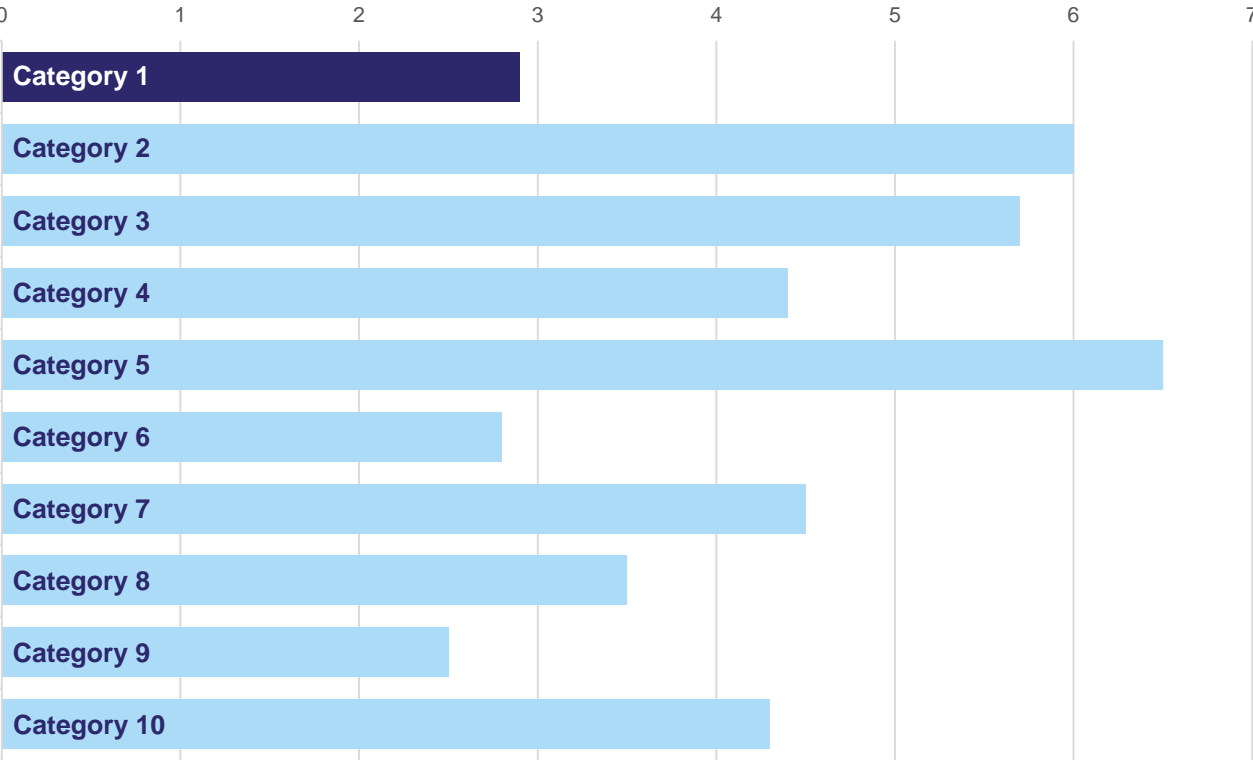
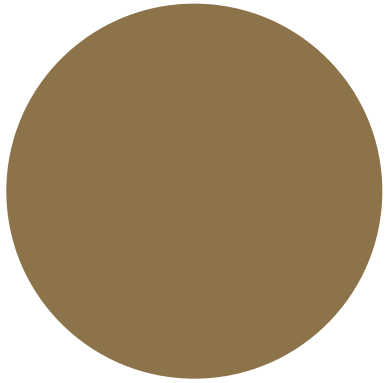


Chart title if required



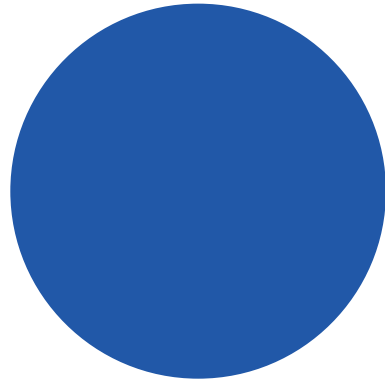
Infographic 1

Delete infographic/s and text as required



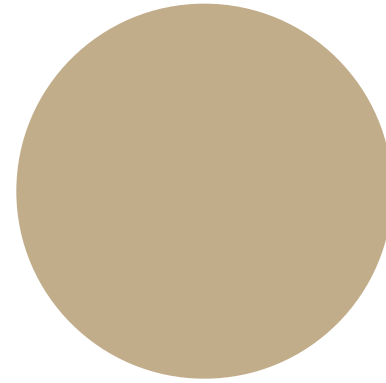
Key figure

Text or key fact goes here
and over this many lines



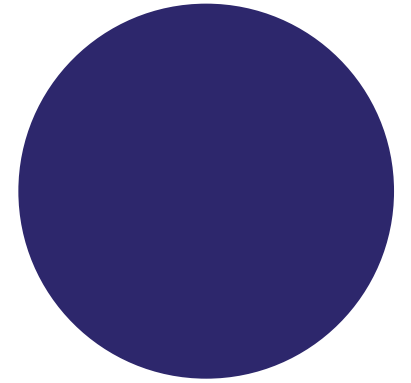
Key figure

Text or key fact goes here
and over this many lines



Key figure

Text or key fact goes here
and over this many lines

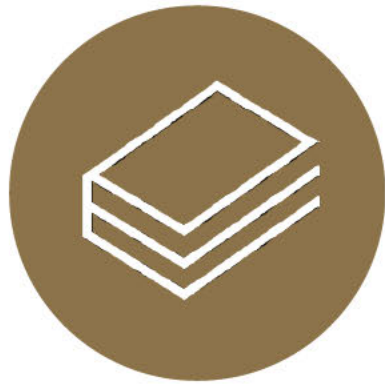


Key figure

Text or key fact goes here
and over this many lines

Infographic 1

Delete infographic/s and text as required



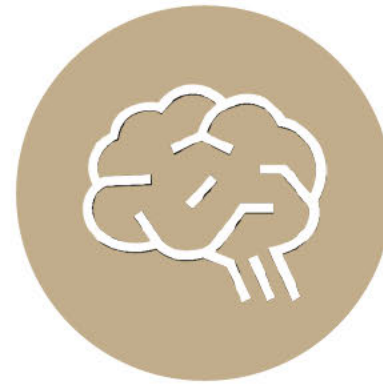
Key figure

Text or key fact goes here
and over this many lines



Key figure

Text or key fact goes here
and over this many lines



Key figure

Text or key fact goes here
and over this many lines

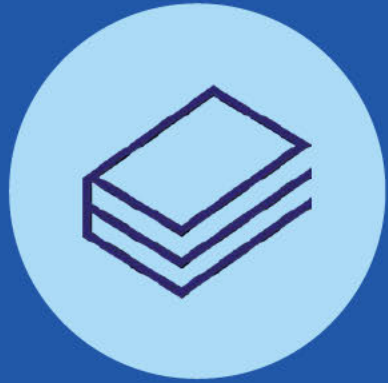


Key figure

Text or key fact goes here
and over this many lines

Infographic 2

Delete infographic/s and text as required



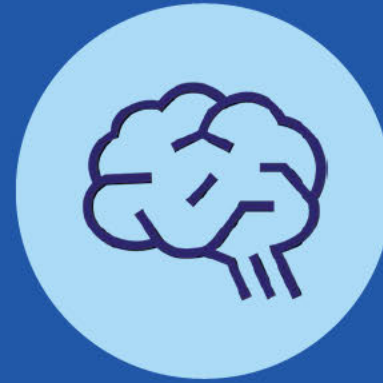
Key figure

Text or key fact goes here
and over this many lines



Key figure

Text or key fact goes here
and over this many lines



Key figure

Text or key fact goes here
and over this many lines



Key figure

Text or key fact goes here
and over this many lines

Questions & discussion

1. Prompt question to encourage discussion



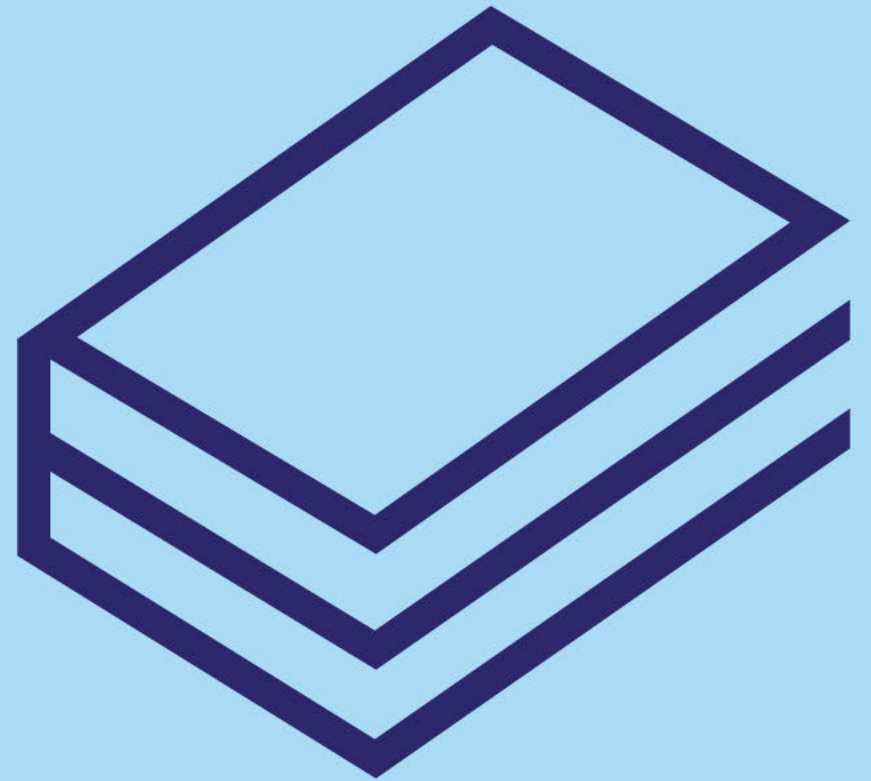
Questions & discussion

1. Prompt question to encourage discussion



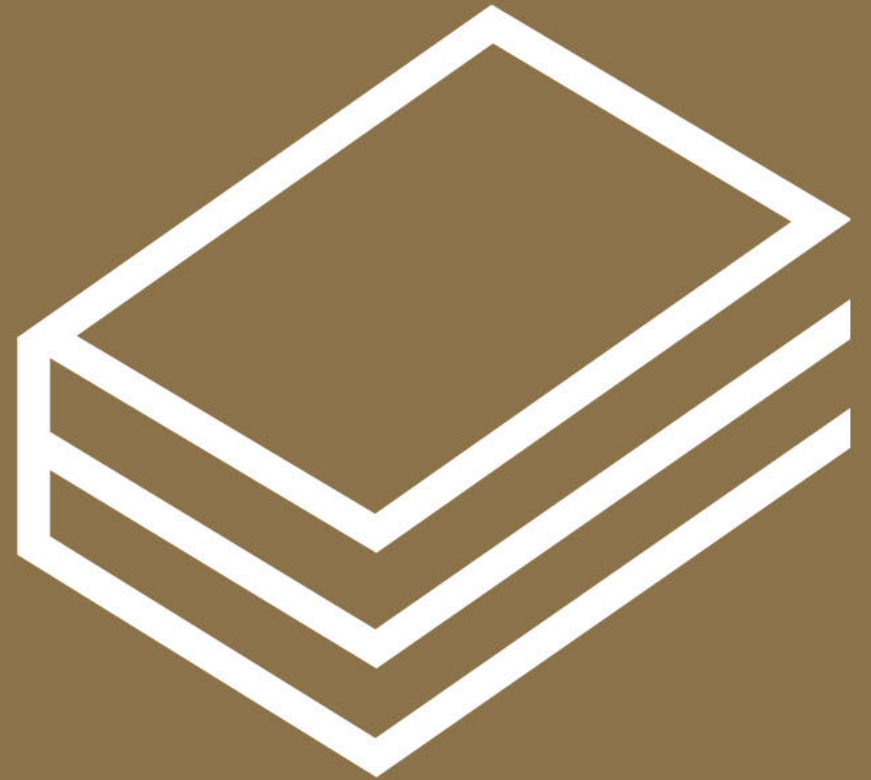
Appendix A

Title of appendix



Appendix A

Title of appendix



Thank you

General enquiries beta@pmc.gov.au
Media enquiries media@pmc.gov.au
Find out more pmc.gov.au/beta

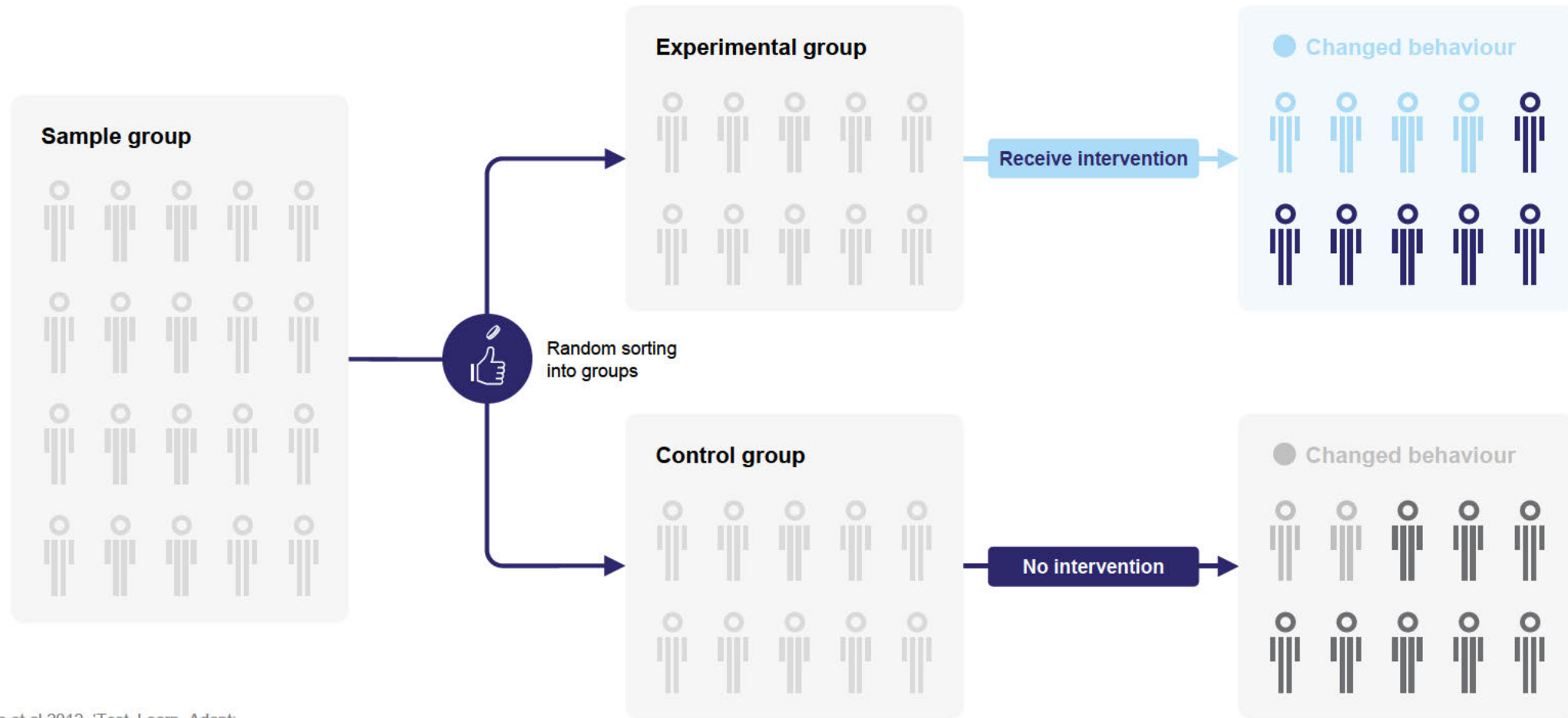
Behavioural Economics Team of the Australian Government

Thank you

General enquiries beta@pmc.gov.au
Media enquiries media@pmc.gov.au
Find out more pmc.gov.au/beta

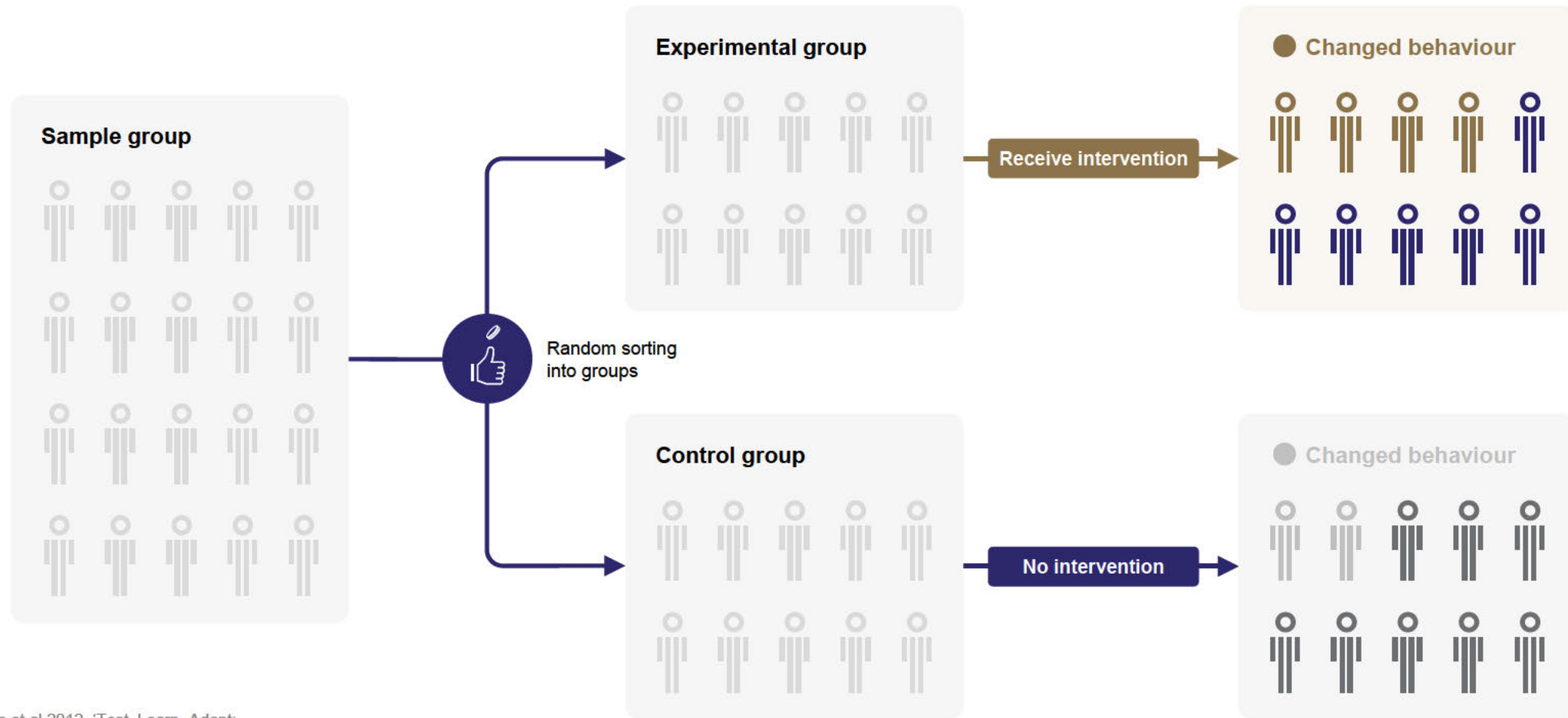
Behavioural Economics Team of the Australian Government

Randomised Controlled Trials (RCTs)



Source: Haynes et al 2012, 'Test, Learn, Adapt: Developing Public Policy with Randomised controlled Trials'

Randomised Controlled Trials (RCTs)



Source: Haynes et al 2012, 'Test, Learn, Adapt: Developing Public Policy with Randomised controlled Trials'

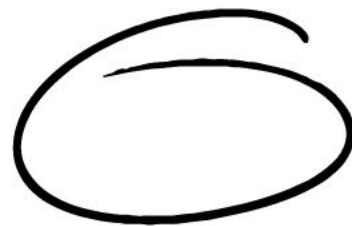
Graphic library



circle_1



circle_2



circle_3



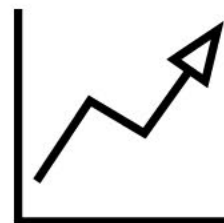
underline



brain



conversation



data



document



idea

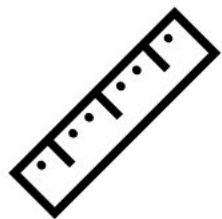


figure 1



figure 2

Graphic library



measurement



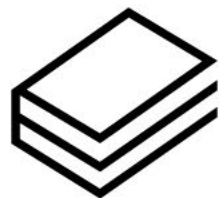
money



news



podcast



reports



research



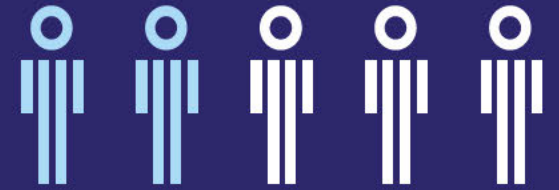
results



thinking

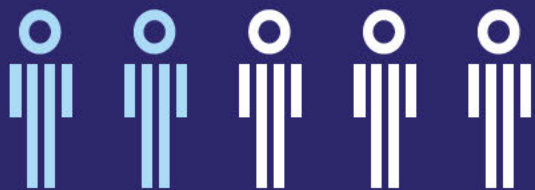
Key statistics

The following page contains graphics to be edited and reused for key stats for 5, 10 and 100 people



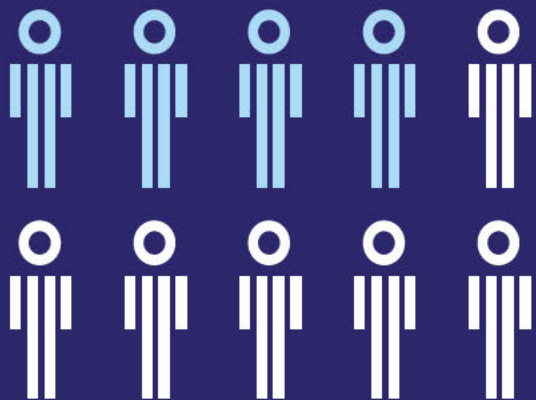
2/5 people

Text or key fact goes here
and over this many lines



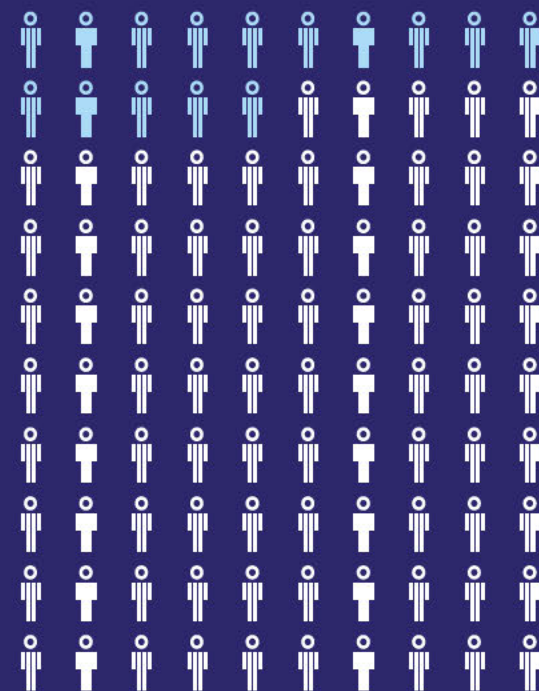
2/5 people

Text or key fact goes here
and over this many lines



4/10 people

Text or key fact goes here
and over this many lines

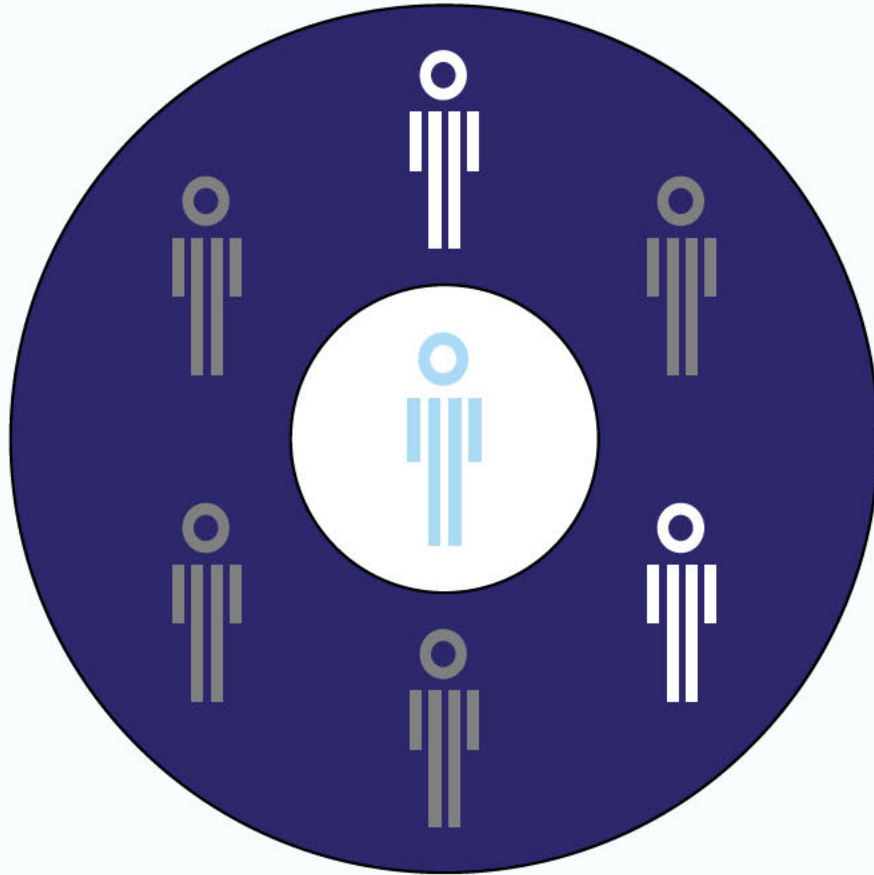


15% people

Text or key fact goes here
and over this many lines

Sample graphics

Copy and paste this graphic and edit as required



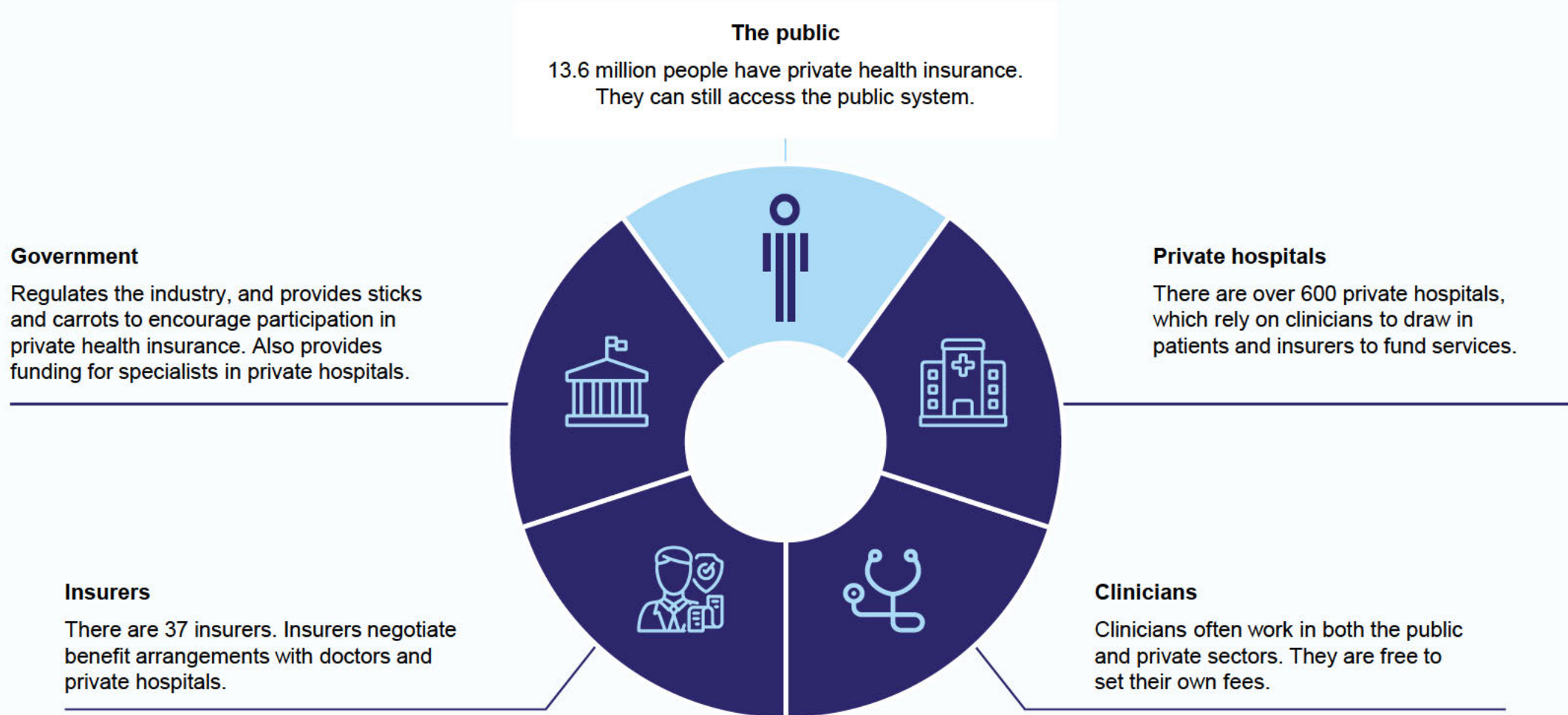
Key fact or interesting statistic goes here

This slide works as a stand-out slide, so the type is a little bigger than usual. It can help to draw attention to key information, or help pace out your document.

Caption and/or source goes here in 8pt where needed.

Sample graphics

Copy and paste this graphic and edit as required





BETA Report Template

Examples and instructions

1

2

3

General instructions

Using the BETA report deck

This presentation deck template contains examples of the available layouts. There are several cover pages, section dividers, tables of contents, Q&A, appendix, and thank you pages.

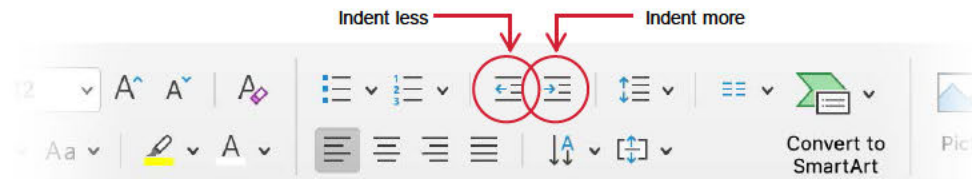
There are also lots of page layouts for you to choose from that include one or a combination of:

- Text
- Call outs
- Tables
- Charts
- Images
- Infographics

Note that tables and charts are not templated – please use the [green chart template file](#) to create these, and then copy and paste them into your presentation.

This template also includes a selection of BETA icons and two versions of the RCT diagram. These are all editable.

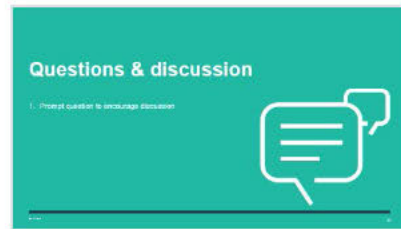
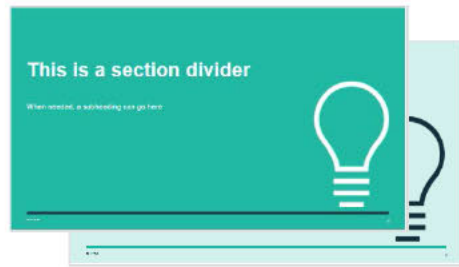
Each master text box on each page will default to the first style shown on each of the sample layouts. To access the included styles within each text box, select the text to be changed and click the **Indent more** button (to change to the next style) or the **Indent less** button (to change to the previous style) on the home tab (shown below).



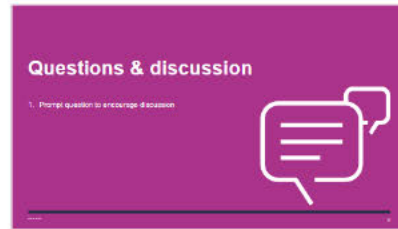
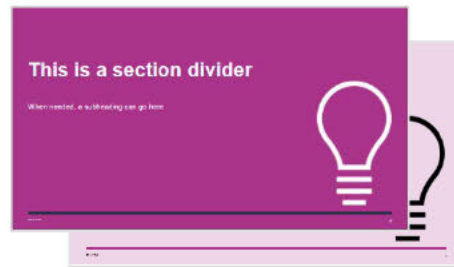
General instructions

Choosing a colour scheme

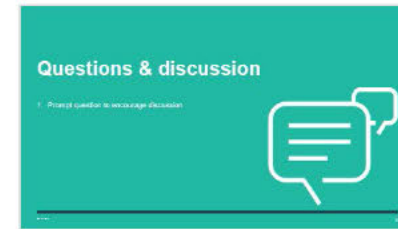
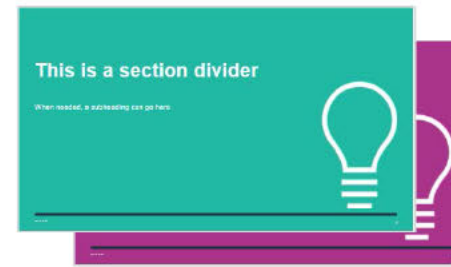
1 - all green
(light green subordinate)



2 - all pink
(light pink subordinate)



3 - mostly one colour
(opposite colour subordinate)



Tips:

- The light green and light pink dividers should be subordinate – i.e. sub-section dividers – to their matching brighter colours, as in examples 1 and 2.
- Don't use *only* the light green and/or pink slides. They aren't core BETA colours.
- You can mix and match green and pink slides – like example 3 – but consider the hierarchy you're creating.



Short presentation title here

Subtitle, description or presentation name goes here

Date or further information goes here

■

■

■



An example of a cover with an unavoidably long title

Subtitle, description or presentation name goes here

Date or further information goes here





An example of a cover with a long title (can also be used for short)

Subtitle, description or presentation name goes here

Date or further information goes here



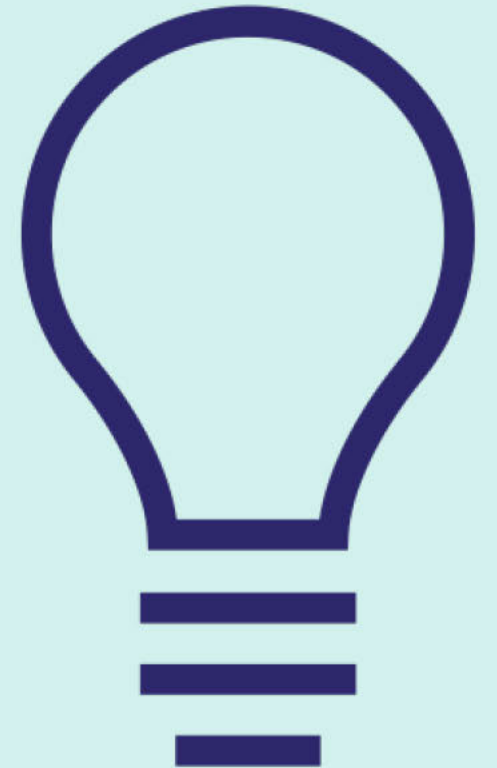
This is a section divider

When needed, a subheading can go here



This is a section divider

When needed, a subheading can go here



This is a section divider

When needed, a subheading can go here



This is a section divider

When needed, a subheading can go here

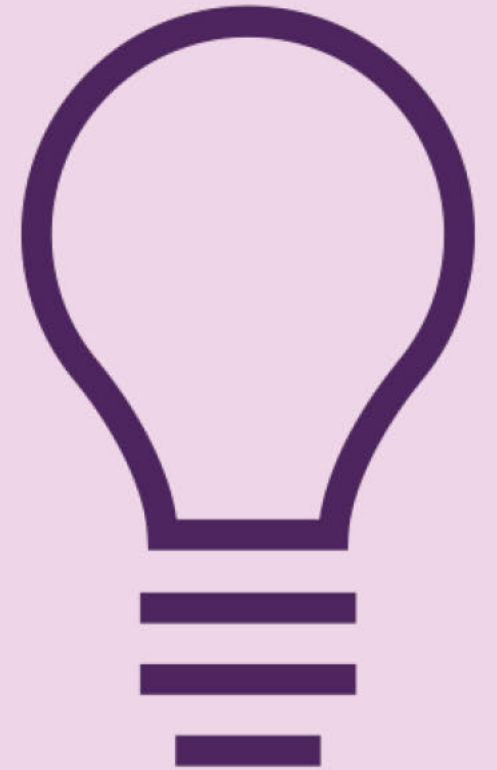


Table of contents

1. Level 1 heading	3
A. Level 2 heading	4

Table of contents

1. Level 1 heading	3
A. Level 2 heading	4

One column text

Continuous text columns

Introduction

Subheading

Text

- Bullet 1
 - Bullet 2

Two column text

Continuous text columns

Introduction

Subheading

Text

- Bullet 1
 - Bullet 2

Three column text

Continuous text columns

Introduction

Subheading

Text

- Bullet 1
 - Bullet 2

Four column text

Individual text columns

Subheading

Text

- Bullet 1
- Bullet 2

Subheading

Text

- Bullet 1
- Bullet 2

Subheading

Text

- Bullet 1
- Bullet 2

Subheading

Text

- Bullet 1
- Bullet 2

Two column text with quote 1

Continuous text columns

Introduction

Subheading

Text

- Bullet 1
 - Bullet 2

Quote here

Quote attribution

Two column text with quote 2

Continuous text columns

Introduction

Subheading

Text

- Bullet 1
 - Bullet 2

Quote here

Quote attribution

One column text + image

Subtitle

Introduction

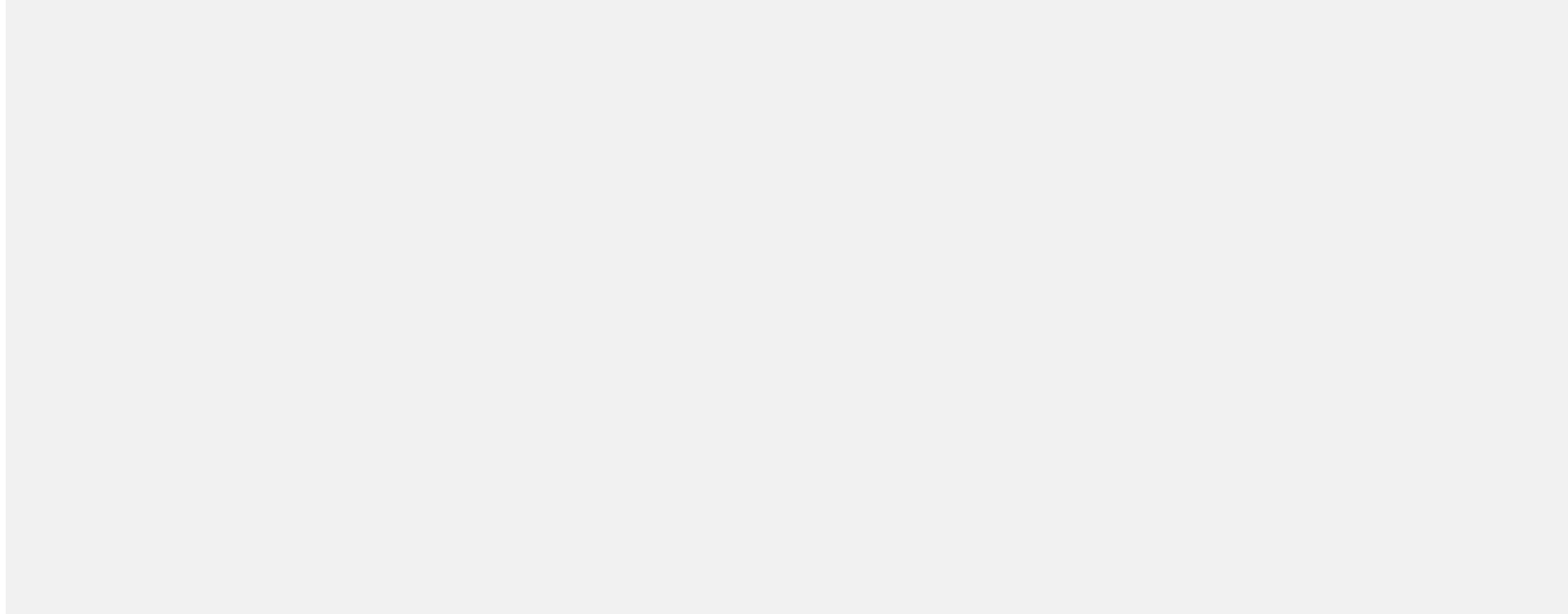
Subheading

Text

- Bullet 1
 - Bullet 2

Image only

Subtitle goes here if required



Text + table

Copy and paste this table and edit as required

Introduction

Subheading

Text

- Bullet 1
 - Bullet 2

Table title (if required)

	Strongly Disagree	Disagree	Neutral	Agree	Strongly Agree
Statement 1	0%	5%	12%	90%	75%
Statement 2	15%	1%	5%	14%	24%
Statement 3	62%	0%	30%	8%	0%
Statement 4	82%	25%	42%	5%	56%

Table only

Copy and paste this table and edit as required

Table heading if required.

	Header column 1	Header column 2	Header column 3	Header column 4
Row 1 Bold	Column 1 Row 1	Column 2 Row 1	Column 3 Row 1	00.000
Row 2 Bold	Column 1 Row 2	Column 2 Row 2	Column 3 Row 2	00.000
Row 3 Bold	Column 1 Row 3	Column 2 Row 3	Column 3 Row 3	00.000
Row 4 Bold	Column 1 Row 4	Column 2 Row 4	Column 3 Row 4	00.000
Row 5 Bold	Column 1 Row 5	Column 2 Row 5	Column 3 Row 5	00.000
Row 6 Bold	Column 1 Row 6	Column 2 Row 6	Column 3 Row 6	00.000
Row 7 Bold	Column 1 Row 7	Column 2 Row 7	Column 3 Row 7	00.000
Row 8 Bold	Column 1 Row 8	Column 2 Row 8	Column 3 Row 8	00.000
Row 9 Bold	Column 1 Row 9	Column 2 Row 9	Column 3 Row 9	00.000

Notes/source if required

Chart and key figure

Copy and paste chart and key figure and edit as required

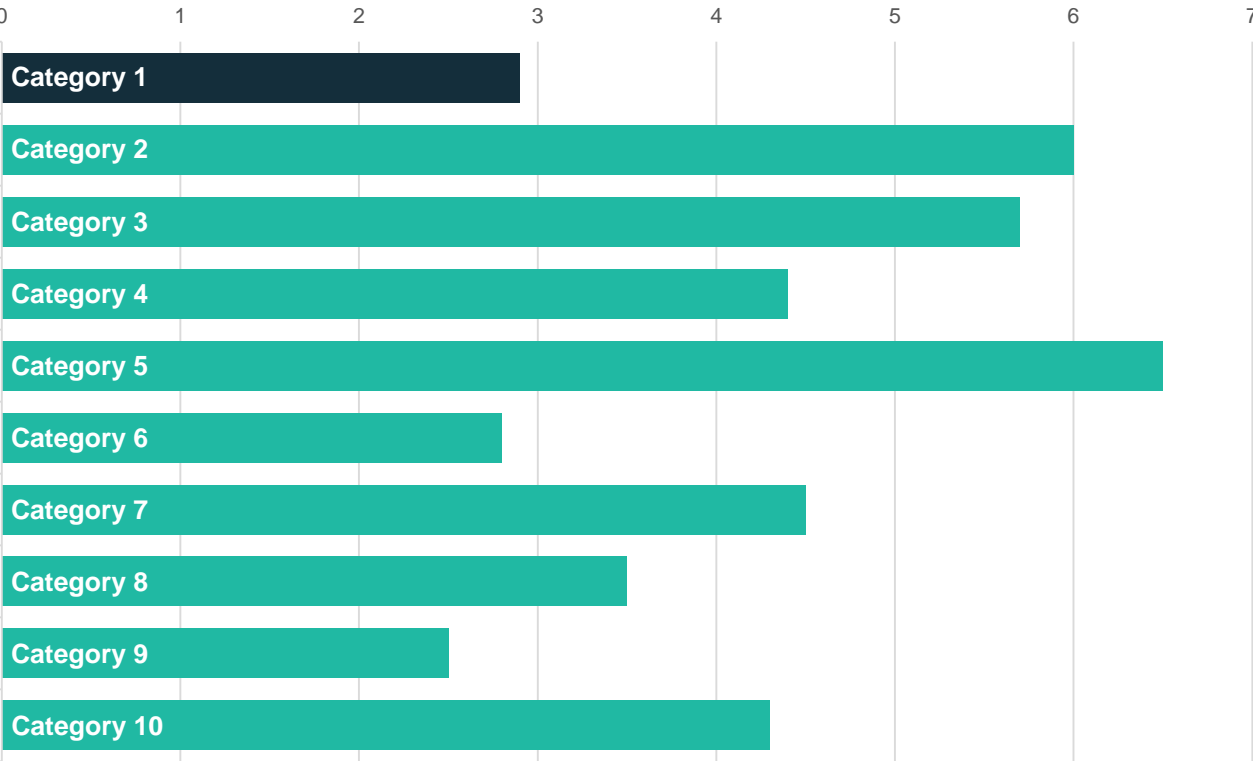
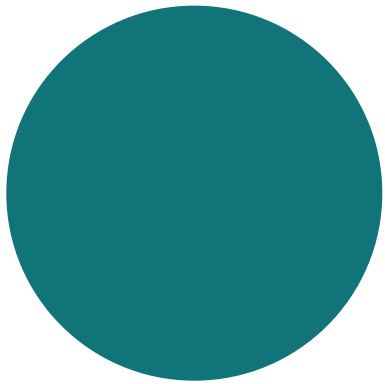


Chart title if required



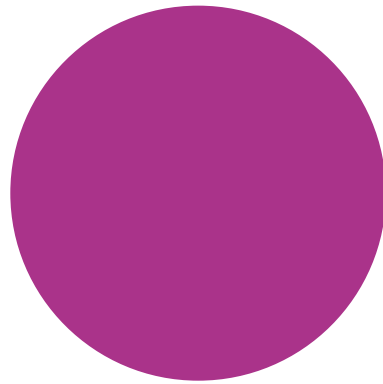
Infographic 1

Delete infographic/s and text as required



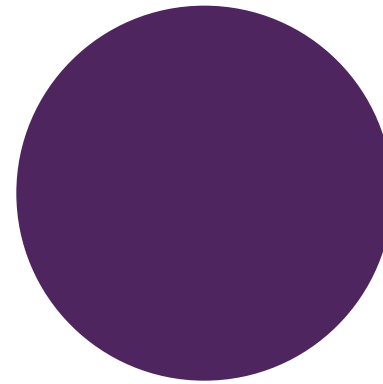
Key figure

Text or key fact goes here
and over this many lines



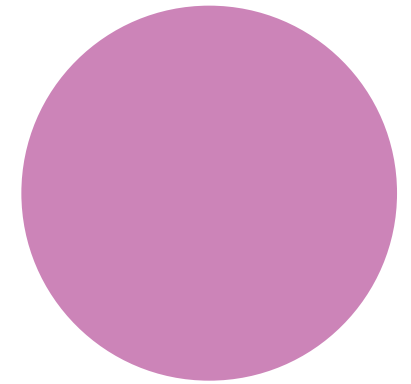
Key figure

Text or key fact goes here
and over this many lines



Key figure

Text or key fact goes here
and over this many lines

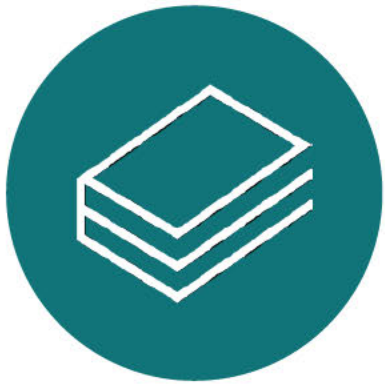


Key figure

Text or key fact goes here
and over this many lines

Infographic 1

Delete infographic/s and text as required



Key figure

Text or key fact goes here
and over this many lines



Key figure

Text or key fact goes here
and over this many lines



Key figure

Text or key fact goes here
and over this many lines



Key figure

Text or key fact goes here
and over this many lines

Infographic 2

Delete infographic/s and text as required



Key figure

Text or key fact goes here
and over this many lines



Key figure

Text or key fact goes here
and over this many lines



Key figure

Text or key fact goes here
and over this many lines



Key figure

Text or key fact goes here
and over this many lines

Questions & discussion

1. Prompt question to encourage discussion



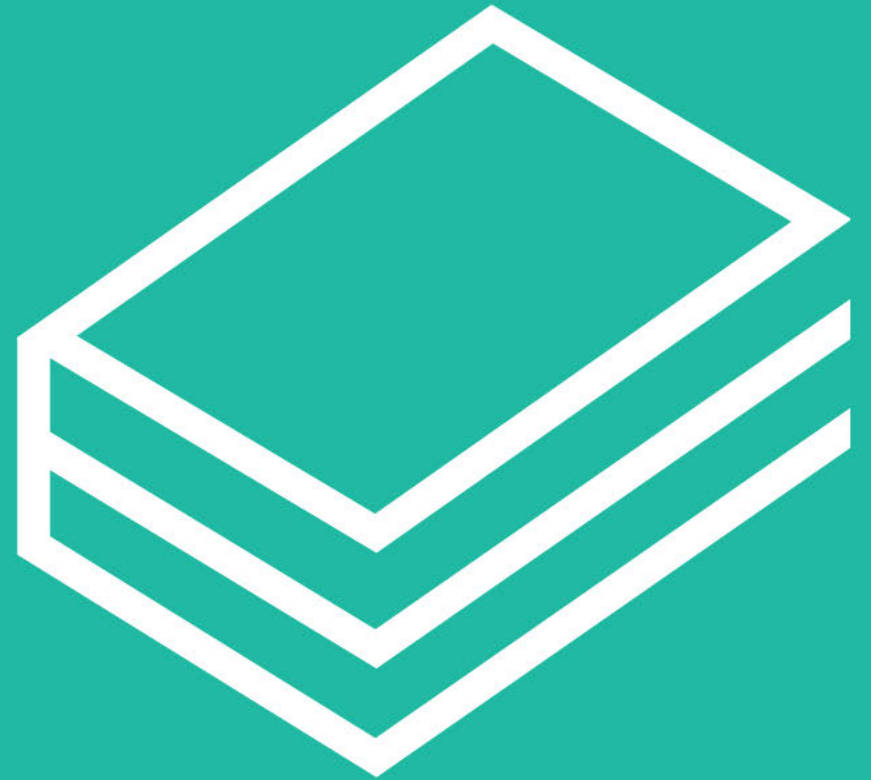
Questions & discussion

1. Prompt question to encourage discussion



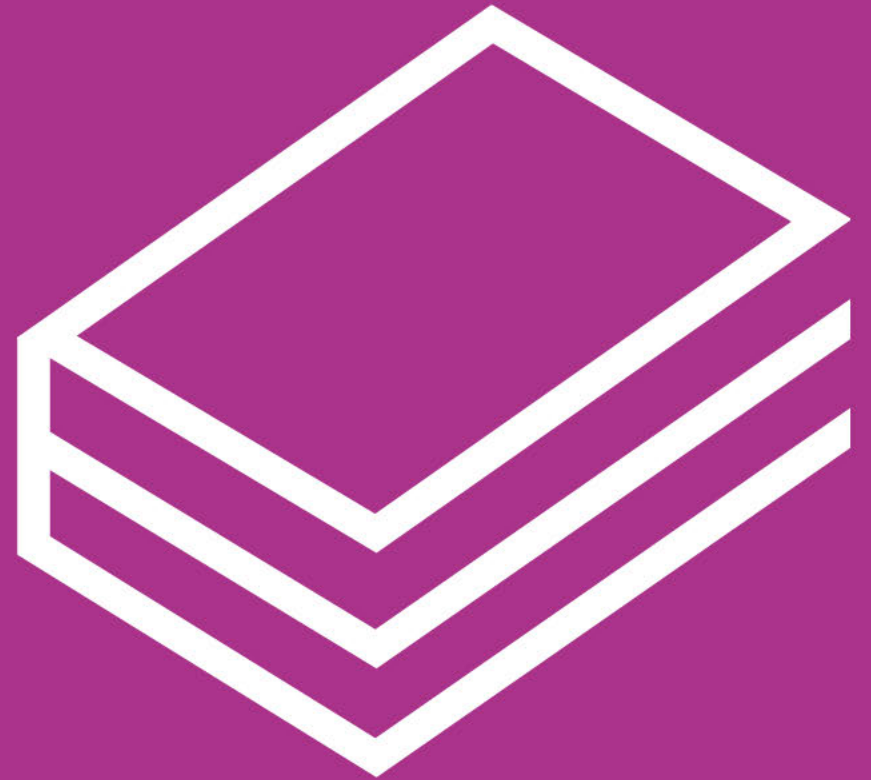
Appendix A

Title of appendix



Appendix A

Title of appendix



Thank you

General enquiries beta@pmc.gov.au
Media enquiries media@pmc.gov.au
Find out more pmc.gov.au/beta

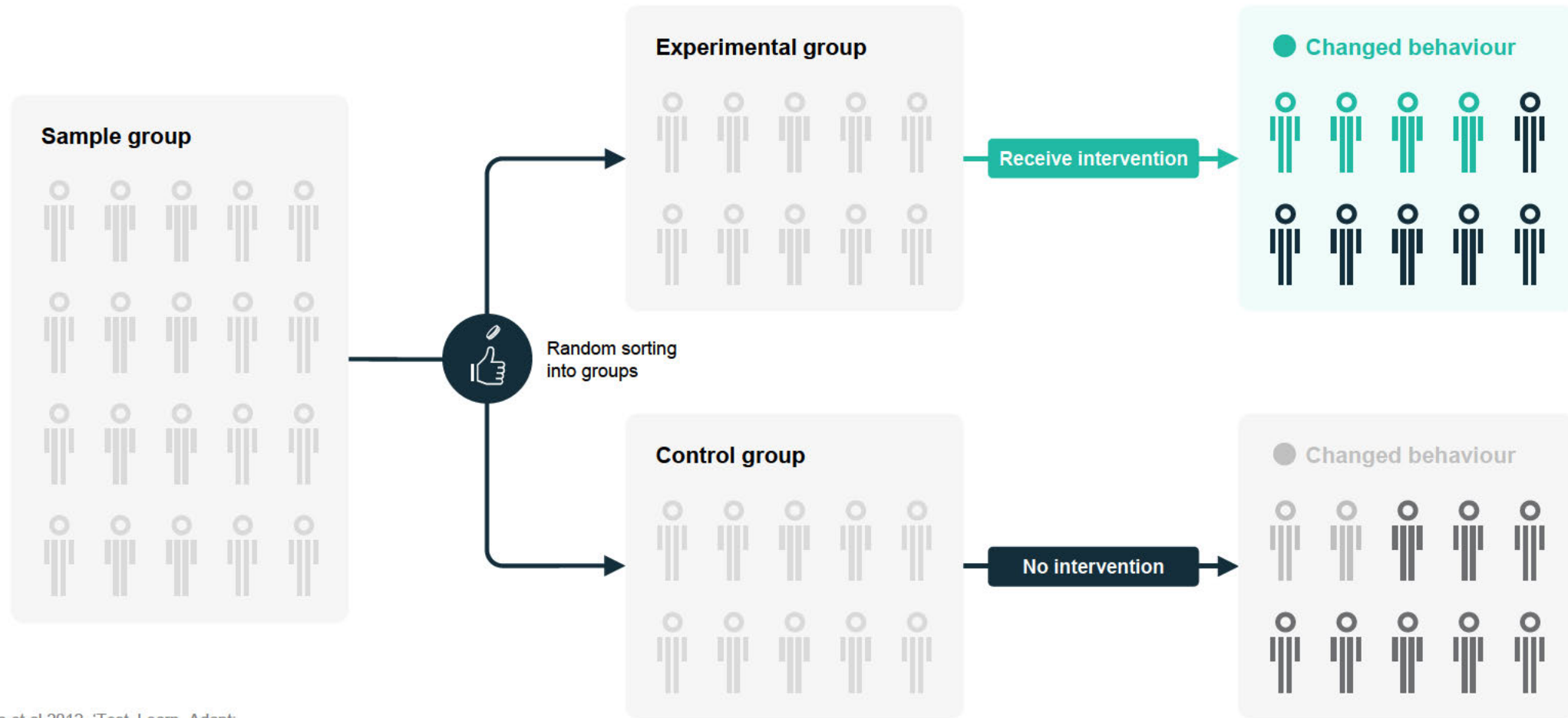
Behavioural Economics Team of the Australian Government

Thank you

General enquiries beta@pmc.gov.au
Media enquiries media@pmc.gov.au
Find out more pmc.gov.au/beta

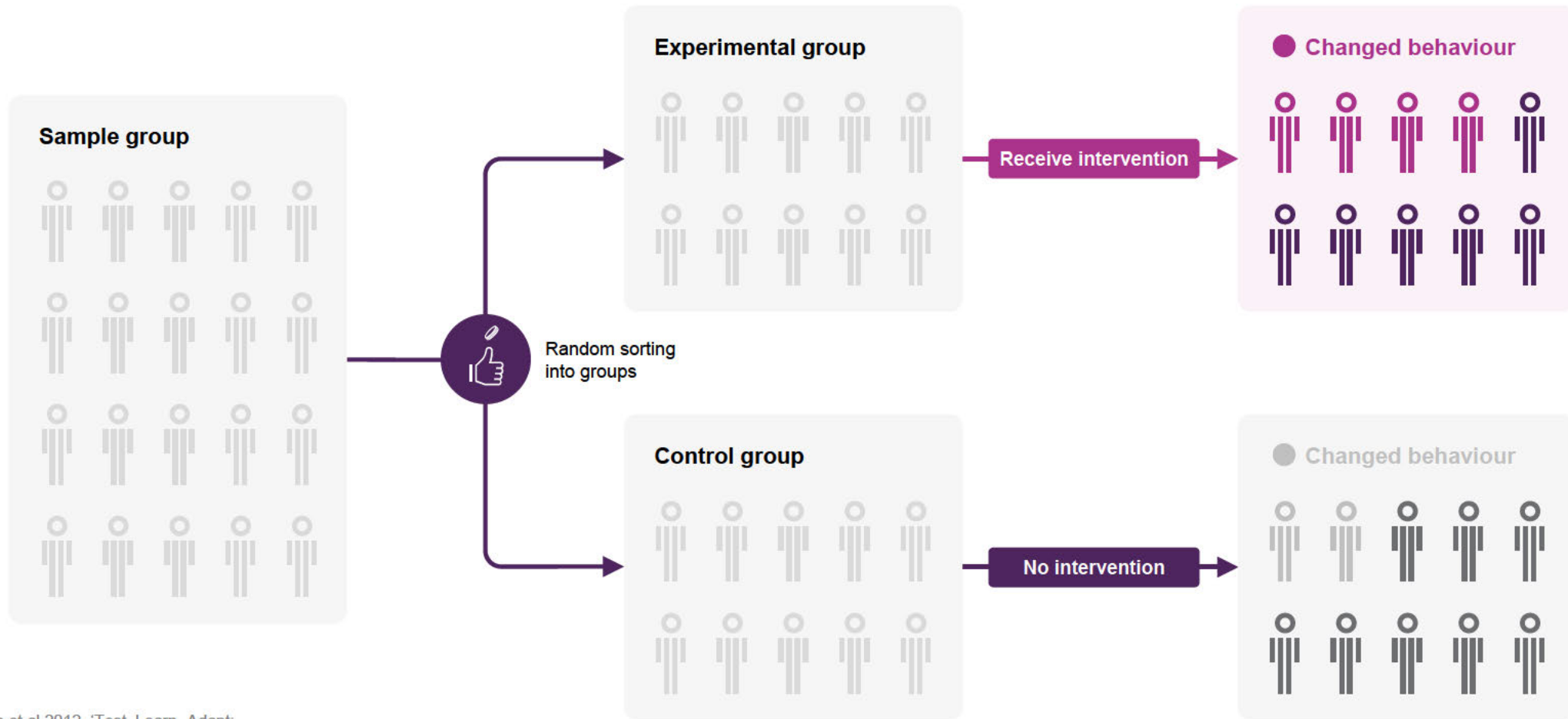
Behavioural Economics Team of the Australian Government

Randomised Controlled Trials (RCTs)



Source: Haynes et al 2012, 'Test, Learn, Adapt: Developing Public Policy with Randomised controlled Trials'

Randomised Controlled Trials (RCTs)



Source: Haynes et al 2012, 'Test, Learn, Adapt: Developing Public Policy with Randomised controlled Trials'

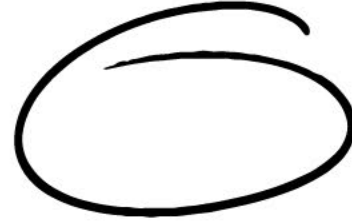
Graphic library



circle_1



circle_2



circle_3



underline



brain



conversation



data



document



idea

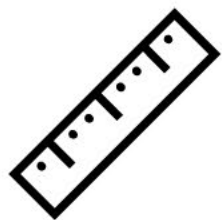


figure 1



figure 2

Graphic library



measurement



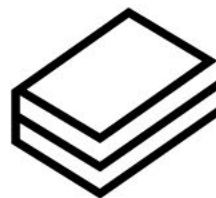
money



news



podcast



reports



research



results



thinking

Key statistics

The following page contains graphics to be edited and reused for key stats for 5, 10 and 100 people



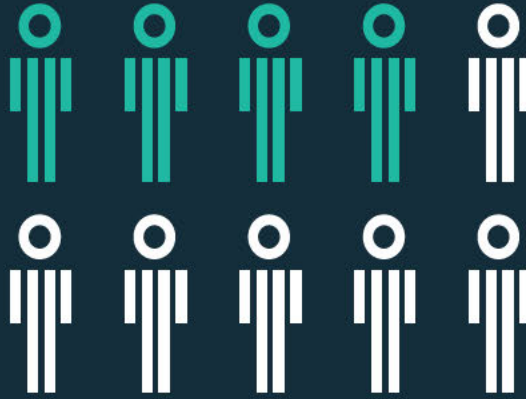
2/5 people

Text or key fact goes here
and over this many lines



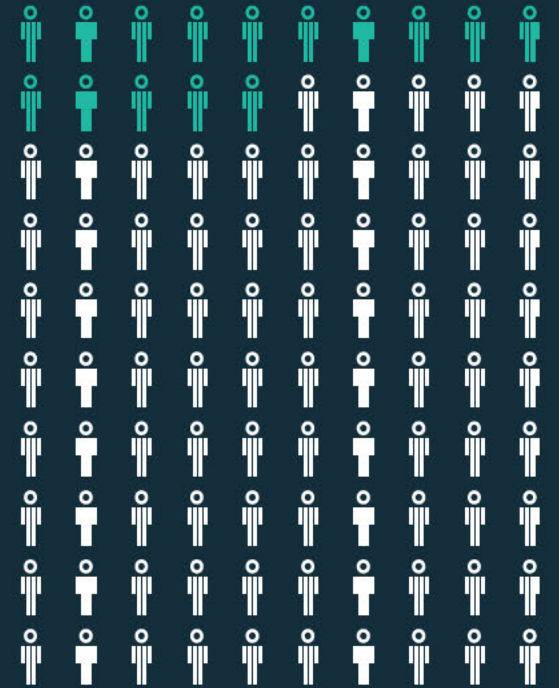
2/5 people

Text or key fact goes here
and over this many lines



4/10 people

Text or key fact goes here
and over this many lines



15% people

Text or key fact goes here
and over this many lines

Sample graphics

Copy and paste this graphic and edit as required



Key fact or interesting statistic goes here

This slide works as a stand-out slide, so the type is a little bigger than usual. It can help to draw attention to key information, or help pace out your document.

Caption and/or source goes here in 8pt where needed.

Sample graphics

Copy and paste this graphic and edit as required

